

VOLVO

Volvo Car Corporation

Application Of Odette

AVIEXP

9308-2 (2009-01-08)

Volvo Car Corporation
Dept 82300

405 31 GOTHENBURG

Contents

1 General	2
2 The purpose and basic function of the message	2
3 Despatch advice vis.a.vis document	3
4 Creation of a despatch advice	3
5 Detailed Information about Packaging	4
6 AVIEXP Reference to the Odette transport Label (OTL)	5
7 Detailed application.....	6
8 Examples of application	7
9 AVIEXP Despatch Advise	10

Application of despatch (AVIEXP Ver. 3) within Volvo Car

1 General

This document describes Volvo Car's application of ODETTE message for despatch advice (AVIEXP).

The specification offers a detailed description of those data elements, which will be used.

The basis of this application is the ODETTE message entitled AVIEXP version 3 issued by the secretariat in June 1990.

The frequency and scope of the AVIEXP are specific for each company within Volvo Car.

For information listed below see the "Technical annex e to the frame agreement for deliveries to Volvo Car" regarding:

- General information
- Explanation of codes used in the segment description.
- General arrangement
- Communication
- Application of ISO/EDIFACT
- Service segments
- Instruction for implementation

2 The purpose and basic function of the message

The purpose of the despatch advice is to provide the final consignee of the goods with detailed information relating to the actual contents of a consignment sent by a consignor.

The message is based upon the definition of a consignment as a specified amount of goods sent by a specified consignor to a specified consignee on a specific occasion.

Notification is to be given of deliveries to all Volvo units.

The message gives the following information:

- To state the actual time for despatch.
- To provide specific information concerning transportation.
- To specify the actual packages included in the consignment.
- To specify the contents of the consignment.
- To provide the necessary documentation for customs clearance.

3 Despatch advice vis.a.vis document

The contents and structure of the AVIEXP message corresponds to the despatch advice document for domestic consignments, and to the invoice/despatch advice for border crossing consignment.

Despatch advice will progressively replace the paper documents as the operative source of information, but during a transition period; despatch advice and the corresponding documents will be used in parallel.

4 Creation of a despatch advice

An AVIEXP shall state the actual contents of a shipment.

Notification must therefore not be made until the actual loading procedure is completed and **no later than one hour after the goods have been despatched.**

The consignor is free to let consignment consist of one or several articles. Volvo however consider it as an advantage, if all articles and packages, which are delivered to one and the same final delivery point - on one and the same occasion - are specified on one and the same despatch advice (AVIEXP).

In the event that the quantity of goods defined in a particular consignment is too large to be accommodated in its entirety on one vehicle/trailer/container etc. It is necessary to redefine the consignment so it relates only to the vehicle/trailer/container etc. on which it is being transported.

5 Detailed Information about Packaging

This part of the despatch advice is rather complicated. Therefore we will try to make some clarifications in this chapter and also in the examples in the next chapter.

5.1 Package and Handling Unit (two key expressions concerning the packaging)

- **Package Unit**

A unit in which the article itself is loaded.

- **Handling Unit**

A device which can be handled physically (e.g. pallet) and may carry one or several packages. Handling Units can be differentiated:

Simplified Handling Unit (S)

Consists of one package which is a handling unit at the same time.

Non Simplified Handling Unit (M & G)

Consists of one or more packages which are not handling units at the same time.

Non-Simplified Handling Unit can be of two kinds:

Homogenous Handling Unit (M)

Consists of one unique article number.

Mixed Handling Unit (G)

Consists of more than one article number.

6 AVIEXP Reference to the Odette transport Label (OTL)

Odette Transport Label		AVIEXP				
Data Element	Label ID Code	Entity	Attribute	Segment	Component Element	Data Element
Receiver		Consignee	Name of Consignee	CSG	C008	3036
Dock/Gate		Location	Additional Internal destination	CSG	C010	3923
Advice Note Number	N	Message	Despatch advice	MID	1004	
Supplier Address						
Net Weight						
Gross Weight						
No. Boxes						
Part Number	P	Scheduled Part	Part Number	ARD	C039	7304
Quantity	Q	Group of packages	Dispatch quantity	ARD	C045	6270
Unit Of Measurement		Group of packages	Quantity per pack	TCO	C151	6853
Description						
Logistic Reference Area						
Supplier ID	V	Consignor	Consignor's ID	CDT	C006	3296
Date						
Engineering Change		Article	Engineering change number	ARD	C040	7860
Serial Number	S	individual handling unit	Handling unit category	NCO	C155	7102
Master Label Number	M or G	individual handling unit	Handling unit category	NCO	7246	
Batch Number	H	Production Batch	Batch number	ADP	7338	

DELINS – CSG 3036	Receiver VOLVO CARS	Dock / Gate 445 M1	AVIEXP – CSG 3923 DELINS – CSG 3923
AVIEXP – MID 1004	Advice Note No (N) 113776	Supplier name and address SUPPLIER NAME	
		Net Weight (kg) Gross weight (kg) No. of boxes 1	
AVIEXP – ARD 7304 DELINS – ARD 7304	Part Number (P) 1234567		
AVIEXP – ARD 6270	Quantity (Q) 128	Description ITEM 1	
		Supplier Part Number 1626997	
AVIEXP – CDT 3296 DELINS – CDT 3296	Supplier Number (V) ABCD1	Date D010306	Eng. Change P03
AVIEXP – NCO 7102 (S) AVIEXP – NCO 7246 (M or G)	Serial Number (S) 123	Charge-No (H)	AVIEXP – ARD 7860*
			* After special agreement

Remarks:

- All fields must be without leading zeroes or spaces
- All information in barcode, must begin with adequate label id code. (e.g. N113776, P1234567, Q128, VABCD1 AND S123)
- Detailed Information of the LABEL to be found in:
"Application Of Odette Transport Label Vers.1 Rev 4"
<http://www.volvo.com/volvoit/edi/en-gb/vcc/specifications/>

7 Detailed application

The following section includes only those segments and data elements, which are included in Volvo's requirements.

The supplier may of course include any other additional information he considers necessary, as long as it follows Odette Standard. Volvo will however, not process such information.

Segments

Under each segment heading, we are giving instructions of when to use it.

Some segments will only be used after special agreement.

Data elements and component element

Under each element heading we specify the valid conditions.

Many data elements are subject to special agreements and any Volvo unit is free to make an individual agreement with any supplier in order to fulfil the needs for information of the company.

8 Examples of application

Odette reference for simplified handling unit (S). Consists of one package which is a handling unit at the same time.

On Mars 6th, Volvo's supplier ABCD1 has one outgoing delivery of a product with article number 1234567, to be delivered to Volvo Cars, Plant S7VVA.

The products are packed in packages of 128 on an L-pallet with four frames and a lid.

Carrier CARGOCARE makes delivery to Volvo Cars directly to the specified delivery address.

With the current syntax rules and in accordance with Volvo's specification, the notification is as follows:

UNH+00001+AVIEXP:3::OD'	Message header
MID+113776+010306:1219'	Document number, date and time.
CDT+:::::ABCD1'	Supplier id (GSDB). Assigned by Volvo Cars.
SDT+:::::ABCD2'	Used if Seller and consignor has different supplier id (GSDB). Id assigned by Volvo Cars.
CSG+:::::S7VVA+445+445 M1'	Volvo Cars plant id. Assigned by Volvo Cars. Final delivery point and additional destination
DTR++++:::::CARGOCARE+CMR1234941030'	Carrier code and conveyance reference number.
ARD+1234567+256+123412345445+UK++P03'	Article number, total quantity, order number, origin and design revision number.
TCO+:NIL+2+128:PCE'	Package reference number, number of packages and number of articles in one package.
NCO++S178:S179'	Shipping marks.
UNT+10+00001'	Service segment

Odette reference for homogenous handling unit (M). Small boxes containing the same article number.

On Mars 6th, Volvo's supplier ABCD1 has one outgoing delivery of a product with article number 1234567, to be delivered to Volvo Cars, Plant S7VVA.

The products are packed in 16 small boxes of 56 pieces in each on an L-pallet and a lid.

Carrier CARGOCARE makes delivery to Volvo Cars directly to the specified delivery address.

With the current syntax rules and in accordance with Volvo's specification, the notification is as follows:

UNH+0001+AVIEXP:3::OD'	Message header
MID+113776+010306:1219'	Document number, date and time.
CDT+++++ABCD1'	Supplier id (GSDB). Assigned by Volvo Cars.
SDT+++++ABCD2'	Used if Seller and consignor has different supplier id (GSDB). Id assigned by Volvo Cars.
CSG+++++S7VVA+445+445 M1'	Volvo Cars plant id. Assigned by Volvo Cars. Final delivery point and additional destination
DTR+++++CARGOCARE+CMR1234941030'	Carrier code and conveyance reference number.
ARD+1234567+896+123412345445+UK++P03'	Article number, total quantity, order number, origin and design revision number.
TCO+:NIL+16+56:PCE'	Package reference number, number of packages and number of articles in one package.
NCO+M191+S11:S12:S13:S14:S15:S16:S17:S18:S19:S20:S21:S22:S23:S24:S25:S26'	Transport label number and shipping marks.
UNT+10+0001'	Service segment

Odette reference for mixed handling unit (G). Small boxes containing different article number.

On Mars 6th, Volvo's supplier ABCD1 has one outgoing delivery of products with article numbers 1234567 and 1234568, to be delivered to Volvo, Plant S7VVA.

The article 1234567 is packed in 8 small boxes of 112 pieces in each and the article 1234568 is packed in 8 small boxes of 56 pieces in each; on an L-pallet and a lid.

Carrier CARGOCARE makes delivery to Volvo Cars directly to the specified delivery address.

With the current syntax rules and in accordance with Volvo's specification, the notification is as follows:

UNH+0001+AVIEXP:3::OD'	Message header
MID+113776+010306:1219'	Document number, date and time.
CDT+:::::ABCD1'	Supplier id (GSDB). Assigned by Volvo Cars.
SDT+:::::ABCD2'	Used if Seller and consignor has different supplier id (GSDB). Id assigned by Volvo Cars.
CSG+:::::S7VVA+445+445 M1'	Volvo Cars plant id. Assigned by Volvo Cars. Final delivery point and additional destination
DTR++++:::::CARGOCARE+CMR1234941030'	Code and conveyance reference number.
ARD+1234567+896+123412345445+UK++P03'	Article number, total quantity, order number, origin and design revision number.
TCO+:NIL+8+112:PCE'	Package reference number, number of handling units and number of articles in one handling unit.
NCO+G144+S101:S102:S103:S104:S105:S106:S107:S108'	Transport label number and shipping marks.
ARD+1234568+448+123412345445+UK++P03'	Article number, total quantity, order number and origin.
TCO+:NIL+8+56:PCE'	Package reference number, number of packages and number of articles in one package.
NCO+G144+S109:S110:S111:S112:S113:S114:S115:S116'	Transport label number and shipping marks.
UNT+13+0001'	Service segment

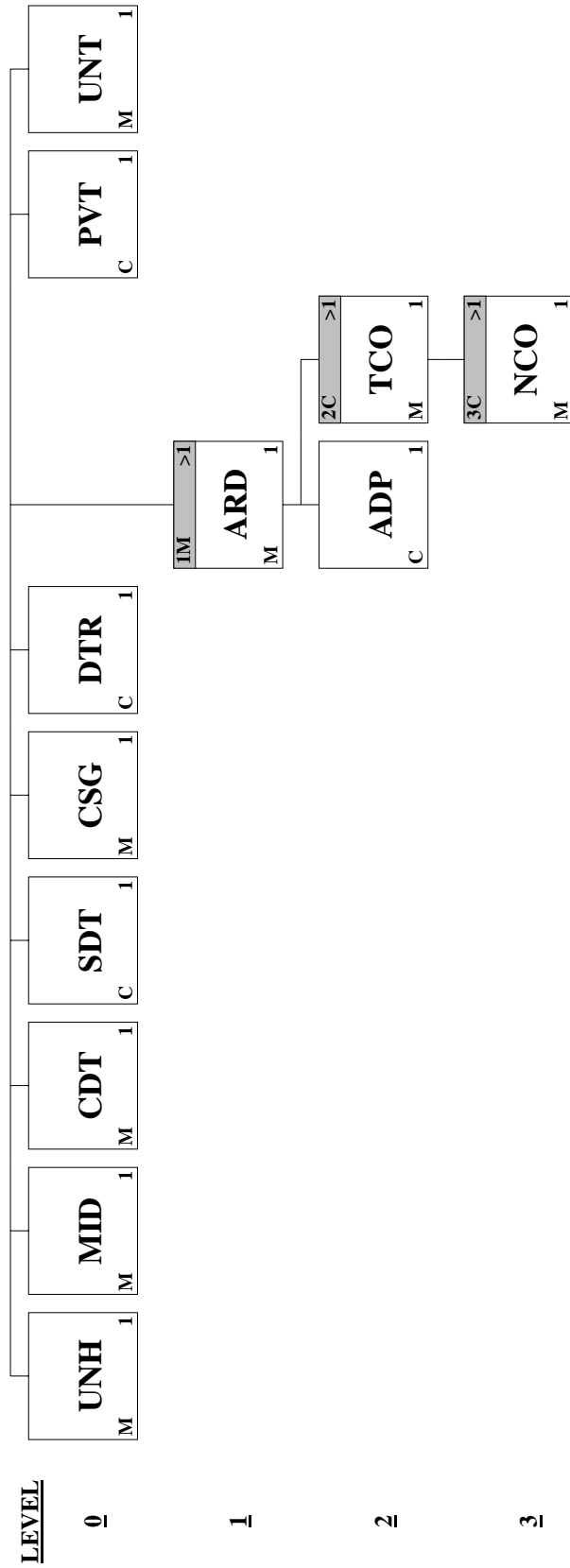
9 AVIEXP Despatch Advise

Introduction:

The Despatch Advice Message is sent by the consignor and is intended to advise the consignee of the despatch of goods and of the detailed contents of the consignment.

Heading Section:

<u>Page No.</u>	<u>Pos. No.</u>	<u>Seg. ID</u>	<u>Name</u>	<u>Base Status</u>	<u>User Status</u>	<u>Max.Use</u>	<u>Group Repeat</u>	<u>Notes and Comments</u>
12	010	UNH	Message Header	M	M	1		
13	020	MID	Message Identification	M	M	1		
14	040	CDT	Consignor Details	M	M	1		
15	050	SDT	Seller Details	C		1		
16	070	CSG	Consignee Details	M	M	1		
17	090	DTR	Data on Transport	C	R	1		
Segment Group 1: ARD-ADP-SG2				M	M		>1	
19	110	ARD	Article Details	M	M	1		
20	120	ADP	Line Item Specific Data	C		1		
Segment Group 2: TCO-SG3				C	R		>1	
22	140	TCO	Type of Package	M	M	1		
Segment Group 3: NCO				C	R		>1	
24	150	NCO	Package Identification Numbers	M	M	1		
29	190	PVT	Weight and Volume Totals	C		1		
29	230	UNT	Message Trailer	M	M	1		



Segment: **UNH** Message Header
Position: 010
Group:
Level: 0
Usage: Mandatory
Max Use: 1
Purpose: To head, identify and specify a message.
Comments:
Notes: Example: UNH+0001+AVIEXP:3::OD'

Data Element Summary

<u>Data Element</u>	<u>Component Element</u>	<u>Name</u>	<u>Base Attributes</u>	<u>User Attributes</u>
0062		MESSAGE REFERENCE NUMBER Unique message reference assigned by the sender. Must be unique in conjunction with 0020 values in UNB. The reference number assigned should be unique not only within a single interchange but across many interchanges from the same sender for a sufficient time to avoid any confusion.	M an..14	M
S009		MESSAGE IDENTIFIER Identification of the type, version etc. of the message being interchanged.	M	M
	0065	Message type identifier Code identifying a type of message and assigned by its controlling agency. Refer to individual ODETTE message specifications.	M an..14	M an..6
	0052	Message Version Number Version number of a message type.	M n..3	M
	0051	Controlling Agency Code identifying the agency controlling the specification, maintenance and publication of the message type. Use OD for ODETTE. OD Odette	C an..2	

Segment: **MID** Message Identification
Position: 020
Group:
Level: 0
Usage: Mandatory
Max Use: 1
Purpose: Segment which must contain the unique reference number of the basic data message and the date/time of its generation.
 If there is concern about the validity of the message, a mutually agreed system of authentication may be implemented by the use of tag 4426.

Comments:
Notes: Example: MID+113776+010306:1219'

Data Element Summary

<u>Data Element</u>	<u>Component Element</u>	<u>Name</u>	<u>Base Attributes</u>	<u>User Attributes</u>
1004		DOCUMENT NUMBER	M an..17	M n..8
		Reference number assigned to the document by the issuer. Unique number for the Despatch Advice (AVIEXP). The number must correspond to the Despatch Note number. The number must not be repeated in one year.		
		Remark: Some recipients may have restrictions on the data format. Please note: This data element is also used in the ODETTE label. Restrictions might occur in the data length. The number must be without leading zero's or spaces.		
C025	2007	DOCUMENT DATE AND TIME Document Date, coded	M n6	M
		Date when the document is issued and - when appropriate -signed or otherwise authenticated. Format YYMMDD.		
	2002	Time	C n4	
		Time of the day based on the 24 hours timekeeping system. Format HHMM.		

Segment: **CDT** Consignor Details
Position: 040
Group:
Level: 0
Usage: Mandatory
Max Use: 1
Purpose: Segment which gives details of the consignor. Identification code must be included and various departmental and contact details may also be given for future reference.

Comments:

Notes: Example: CDT+:::ABCD1'

Data Element Summary

<u>Data Element</u>	<u>Component Element</u>	<u>Name</u>	<u>Base Attributes</u>	<u>User Attributes</u>
C006	3296	CONSIGNOR Internal Identification Number allocated to a Trading Partner Internal Identification Number allocated to a Trading Partner.	M C an..17	M R an5

Segment: **SDT** Seller Details
Position: 050
Group:
Level: 0
Usage: Conditional (Optional)
Max Use: 1
Purpose: Segment which gives details of the seller. Identification code must be included. Commercial, accounting and/or other contact details may be added when required for future reference.

Comments:

Notes: This segment is required when the consignor and the seller have been allocated different supplier numbers by Volvo Car.
Example: SDT+:::ABCD2'

Data Element Summary

<u>Data Element</u>	<u>Component Element</u>	<u>Name</u>	<u>Base Attributes</u>	<u>User Attributes</u>
C032	3296	SELLER Internal Identification Number allocated to a Trading Partner Internal Identification Number allocated to a Trading Partner.	M C an..17	M R an5

Segment: **CSG** Consignee Details
Position: 070
Group:
Level: 0
Usage: Mandatory
Max Use: 1
Purpose: Segment which provides details of the final consignee. Note that this is not necessarily the party taking delivery of the goods (e.g. where the goods are to be held by a grouping centre or third party warehouse). Identification code must be included. For further details about the identification of delivery locations see the general Odette Introduction to Messages, (found in Volume 4, Section 1 of the official Odette manuals).

Comments:

Notes: Example: CSG+:::S7VVA+445+445 M1'

Data Element Summary

<u>Data Element</u>	<u>Component Element</u>	<u>Name</u>	<u>Base Attributes</u>	<u>User Attributes</u>		
C008	3296	CONSIGNEE	M	M		
		Internal Identification Number allocated to a Trading Partner	C an..17	R an5		
		Internal Identification Number allocated to a Trading Partner.				
		Volvo's plant or warehouse number.				
			BP2TC	Overseas Manufacturing, Maastricht		
			BP2TD	Body Plant, Torslanda		
			BP2TF	Special Vehicles, Torslanda		
			BP2TG	Engine Chassis Centre, Torslanda		
			BP2TH	Assembly Plant, Torslanda		
			BP2TU	Pilot Plant, Torslanda		
			BP2TW	Customer Service, Torslanda		
			BS8CA	Assembly Plant, Gent		
			BS8CB	Engine Centre, Gent		
			BS8CE	Special Vehicles, Gent		
	BSB5A	Engine, Floby				
	BSNRA	Body Components, Olofström				
	C7CUL	Engine Plant, Skövde				
	DV8VE	Engine Chassis Centre, Uddevalla				
	S7VVA	Pininfarina Assembly Plant, Uddevalla				
C009	3921	PLACE/LOCATION QUALIFIER	C	R		
		Place/port of discharge	C an..17	R an..8		
		Detailed location within a place of delivery where goods should be unloaded.				
C010	3923	PLACE/LOCATION QUALIFIER	C	C		
		Additional internal destination	C an..17	C an..12		
		Additional detailed information on the location within an organisational entity where goods should be unloaded.				
		This value shall be printed on the transport label in the field "Dock/Gate"				
		The value shall be taken from DELINS CSG3923. Note that the value can change and must always be obtained from the DELINS.				

Segment: **DTR** Data on Transport
Position: 090
Group:
Level: 0
Usage: Conditional (Required)
Max Use: 1
Purpose: Used to give details of the means of transport, places of loading etc. Only Carrier Details (3127/3036/3124/3296); Carriage Payment Instructions (4351) and Place of Loading (3335/3334) must be included in this segment.

Comments:
Notes: Example: DTR+++:::CARGOCARE'

Data Element Summary

<u>Data Element</u>	<u>Component Element</u>	<u>Name</u>	<u>Base Attributes</u>	<u>User Attributes</u>
8212		IDENTIFICATION OF THE MEANS OF TRANSPORT Name or number identifying a vessel or a vehicle, flight number and date, etc. Used only after special agreement.	C an..17	
C015	8164	CONSIGNMENT GROUP NUMBER Trailer Number Registered number of road vehicle trailer. Used only after special agreement.	C C an..17	
	8028	Conveyance Reference Number Unique reference given by the carrier to a certain journey or departure of a means of transport (generic term). Used only after special agreement.	C an..17	
	3296	CARRIER Internal Identification Number allocated to a Trading Partner Internal Identification Number allocated to a Trading Partner. Code for actual carrier. If the Code is not known, insert NIL	M C an..17	M R
1188		TRANSPORT DOCUMENT NUMBER Reference assigned by the carrier or his agent to the transport document. Required information for all transport to Volvo Car's plants and facilities within Sweden. The unique reference number on the transport document must be given in data element 1188 and on the consignment note. In case of consignment notes without a unique reference number, such as CMP consignment notes, we recommend that the supplier creates a unique reference number or uses the following method for unique reference numbers: - type of transport document - supplier (consignor) number - date YYMMDD Example: CMR1234941030	C an..17	

Group: **ARD** Segment Group 1
Position: 110
Group:
Level: 1
Usage: Mandatory
Max Use: >1

Segment Summary

	Pos.	Seg.		Req.	Max.	
	Group:					
	No.	ID	Name	Des.	Use	
	Repeat					
M	110	ARD	Article Details	M	1	
	120	ADP	Line Item Specific Data	C	1	
			Segment Group 2	C		>1

Segment: **ARD** Article Details
Position: 110 (Trigger Segment)
Group: Segment Group 1 Mandatory
Level: 1
Usage: Mandatory
Max Use: 1
Purpose: Segment which identifies an article. The buyer's article number and the order/contract authorising delivery must be given. Three lines of free text may be used but careful consideration should be given before doing so. (See FTX segment below).

If for one delivery instruction an article is related to two different orders, two occurrences of the ARD segment are required: one for each order number. If one article is to be delivered under two different technical statuses, then two different ARD segments are required.

All segments below the Article Details segment relate to the article specified in the preceding ARD segment and may all appear at least once before the ARD segment is repeated to give details of another article.

Comments:

Notes: Example: ARD+1234567+256+123412345445+UK++P03'

Data Element Summary

<u>Data Element</u>	<u>Component Element</u>	<u>Name</u>	<u>Base Attributes</u>	<u>User Attributes</u>
C039		ARTICLE IDENTIFICATION	M	M
	7304	Buyer's Article Number Buyer's reference identifying articles or products. Volvo Car's article number. Must be given without leading zeroes or space.	C an..35	R an..24
C045		QUANTITY AND UNIT	M	M
	6270	Quantity Delivered Quantity delivered by the seller on which the article item amount is calculated. The quantity must correspond to the total sum of packed quantity, which will be indicated in the subordinate TCO segment.	M n..10	M
	6410	Measure Unit Specifier Indication of the unit of measurement in which weight (mass), capacity, length, area, volume or other quantity is expressed. PCE Piece, Each, Single	C an..3	
C046		ORDER OR CONTRACT IDENTIFICATION	M	M
	1022	Order Number Reference number assigned by the buyer to an order. Can be obtained from the DELINS message.	M an..17	M
C047		COUNTRY OF ORIGIN	C	R
	3239	Country of origin, coded Country in which the goods have been produced or manufactured, according to criteria laid down for the purposes of application of the Customs tariff, of quantitative restrictions, or of any other measure related to trade. Codes values according to ISO standard. See appendix number 2.	C a2	R
C040		TECHNICAL STATUS	C	
	7860	Design Revision Number Identification of a carrier by code and/or by name. Code preferred. Used only after special agreement. The revision number of the design specification for an ordered article.	C an..35	an..14

Segment: **ADP** Line Item Specific Data
Position: 120
Group: Segment Group 1 Mandatory
Level: 2
Usage: Conditional (Optional)
Max Use: 1
Purpose: Can occur once for each ARD segment used, containing information concerning the article detailed in the preceding ARD segment. An article batch number, Delivery Instruction number (as opposed to the order or Contract number in the ARD segment) and a part consignment number (data element 1310) similar to the Delivery Instruction number but uniquely associated with the article, can be given. Because there is a one-to-one relationship with the ARD segment it is necessary to repeat the ARD segment each time there is a change in the content of the corresponding ADP segment. Care should therefore be exercised in the use of ADP.

Comments:

Notes: Used after special agreements

Because there is a one-to-one relationship between the ADP segment and the ARD segment, it is necessary to repeat the ARD segment each time there is a change in the content of the corresponding ADP segment.

Example: ADP++556677'

Data Element Summary

<u>Data Element</u>	<u>Component Element</u>	<u>Name</u>	<u>Base Attributes</u>	<u>User Attributes</u>
7338		ARTICLE BATCH NUMBER Reference number assigned by the manufacturer to designate grouping of product within the same production batch. This data element is used when special traceability is required - Document obligation. Volvo Car will provide code values individually to suppliers obtained.	C an..17	an..9
1310		PART CONSIGNMENT NUMBER Reference to a specific consignment forming part of a contract allowing part deliveries. This data element is used to give special references to an order line. Volvo Car will provide instructions to suppliers concerned.	C an..17	
1420		KANBAN CARD NUMBER Reference number assigned by the consignee to a Kanban card.	C an..3	

Group: **TCO** Segment Group 2
Position: 140
Group: Segment Group 1 Mandatory
Level: 2
Usage: Conditional (Required)
Max Use: >1

Segment Summary

	Pos.	Seg.		Req.	Max.
	Group:				
	No.	ID	Name	Des.	Use
	Repeat				
M	140	TCO	Type of Package Segment Group 3	M C	1 >1

Segment: **TCO** Type of Package
Position: 140 (Trigger Segment)
Group: Segment Group 2 Conditional (Required)
Level: 2
Usage: Mandatory
Max Use: 1
Purpose: Segment which contains data specifying the packaging requirements for the consignee.

Comments:
Notes: The TCO segment shall be repeated for every NCO when:
 an article number, shown in the preceding ARD segment, is packed in different type of packages.
 a package contains an odd quantity which differs from standard or recommended quantity.
 M-or G package are used.
 S package: TCO+:NIL+2+128:PCE'

 M package: TCO+:NIL+16+56:PCE'

 G package: TCO+:NIL+8+56:PCE'
 G package: TCO+:NIL+8+56:PCE'

Data Element Summary

<u>Data Element</u>	<u>Component Element</u>	<u>Name</u>	<u>Base Attributes</u>	<u>User Attributes</u>
C099		PACKAGE DATA	M	M
	7064	Type of Packages Description of the form in which goods are presented. Used for contract packaging.	C an..35	
	1906	Package Reference Number Reference number of a package. If no information has been given by Volvo Car's logistic provider, insert NIL.	C an..35	R
7224		NUMBER OF PACKAGES Number of individual parts of a shipment either unpacked, or packed in such a way that they cannot be divided without first undoing the packing. Number of packages = numbers of S-labelled units. (standard pallets or small boxes.) Empty packages shall not be included.	M n..6	M
C151		QUANTITY	C	R
	6853	Quantity of Articles in Package Number of articles in a given package. If the number of packages differs, the TCO-NCO segments should be repeated. The sum of packed quantity given here, shall correspond to the quantity delivered indicated in the ARD segment tag 6270 = number of S labeled units (7224) * packed quantity of S labeled units (6853)	M n..10	M
	6410	Measure Unit Specifier Indication of the unit of measurement in which weight (mass), capacity, length, area, volume or other quantity is expressed. PCE Piece, Each, Single	C an..3	

Group: **NCO** Segment Group 3
Position: 150
Group: Segment Group 2 Conditional (Required)
Level: 3
Usage: Conditional (Required)
Max Use: >1

Segment Summary

Pos.	Seg.		Req.	Max.
Group:				
<u>No.</u>	<u>ID</u>	<u>Name</u>	<u>Des.</u>	<u>Use</u>
<u>Repeat</u>				
M	150	NCO Package Identification Numbers	M	1

Segment:	NCO Package Identification Numbers
Position:	150 (Trigger Segment)
Group:	Segment Group 3 Conditional (Required)
Level:	3
Usage:	Mandatory
Max Use:	1
Purpose:	Segment which contains the label number(s) of all or part of the packages to be despatched. (This number is used to identify the packages to be delivered as the order may vary depending on engineering changes, expiry dates etc.) If a list of the packages contained in a simple or mixed Handling Unit is required, all the Packaging Unit numbers must be included in this segment (data element 7102). If used, data element 2837 Date of Production applies to all products contained in packages having label numbers given with the NCO segment (data element 7102).
Comments:	
Notes:	<p>Standard pallets Goods labelling = S + unique shipping marks. The standard pallet is a simple handling unit, containing a fixed quantity of ONE article number.</p> <p>Homogenous load Goods labelling = M + unique shipping marks. A homogenous load contains a number of small boxes with the same article number. Each small box is individual labelled = S + unique number</p> <p>Mixed loads Goods labelling = G + unique shipping marks. The mixed load is a handling unit containing a number of different article numbers packed in one or more small box/boxes. Each small box is individual labelled = S + unique number. S-package:NCO++S123:S124'</p> <p>M-Package NCO+M191+S11:S12:S13:S14:S15:S16:S17:S18:S19:S20:S21:S22:S23:S24:S25:S26'</p> <p>G package NCO+G137+S512:S513:S514:S515:S516:S517:S518:S519' NCO+G137+S520:S521:S522:S523:S524:S525:S526:S527'</p>

Data Element Summary

<u>Data Element</u>	<u>Component Element</u>	<u>Name</u>	<u>Base Attributes</u>	<u>User Attributes</u>
7246		TRANSPORT LABEL NUMBER	C an..17	an..10
		Number allocated to a label which is used to identify a group of sub-labels within a consignment or major package. Used only for Homogenous (M) or Mixed (G) package. The Transport Label Number must begin with a M or G and be followed by a numeric value, without leading zeroes or spaces.		
C155		MARKS AND NUMBERS	C	
		The Shipping Marks must begin with a S and be followed by a numeric value, without leading zeroes or spaces.		
	7102	Shipping Marks	C an..17	R n..9
		Marks and numbers identifying individual packages.		
	7102	Shipping Marks	C an..17	n..9
		Marks and numbers identifying individual packages.		
	7102	Shipping Marks	C an..17	n..9
		Marks and numbers identifying individual packages.		
	7102	Shipping Marks	C an..17	n..9
		Marks and numbers identifying individual packages.		
	7102	Shipping Marks	C an..17	n..9
		Marks and numbers identifying individual packages.		

7102	Shipping Marks Marks and numbers identifying individual packages.	C	an..17	n..9
7102	Shipping Marks Marks and numbers identifying individual packages.	C	an..17	n..9
7102	Shipping Marks Marks and numbers identifying individual packages.	C	an..17	n..9

Segment: **PVT** **Weight and Volume Totals**
Position: 190
Group:
Level: 0
Usage: Conditional (Optional)
Max Use: 1
Purpose: Segment which contains the total weight and cube of the consignment(s).
Comments:
Notes:

The weight and volume quoted here must match the information on the consignment note and, wherever applicable, the delivery note/invoice.
 Example: PVT+720++1.94'

Data Element Summary

<u>Data Element</u>	<u>Component Element</u>	<u>Name</u>	<u>Base Attributes</u>	<u>User Attributes</u>
C146		WEIGHT	M	M
	6012	Consignment Gross Weight Total gross weight (mass) of all goods items referred to as one consignment. This weight can be obtained by adding together the gross weights of all the parcels in the consignment, including empty filler units.	M n..12	M
C089		CUBE	C	
	6422	Consignment Cube Total cube of all goods items referred to as one consignment. This volume can be obtained by adding together the volumes of all the parcels in the consignment, including empty filler units. An amount having a decimal separator, must have at least one digit before and after the separator. Ending zeroes should be omitted. I.e. 15.000 is indicated 15 15.0 or 15,0 15.500 is indicated 15.5 or 15,5 5.550 is indicated 15.55 or 15,55 15.555 is indicated 15.555 or 15,555 Volume information for the most common standard packaging will be found in Appendix 5.	M n..9	M

Segment: **UNT** Message Trailer
Position: 230
Group:
Level: 0
Usage: Mandatory
Max Use: 1
Purpose: Message Trailer
Comments:

Data Element Summary

<u>Data Element</u>	<u>Component Element</u>	<u>Name</u>	<u>Base Attributes</u>	<u>User Attributes</u>
0074		NUMBER OF SEGMENTS IN A MESSAGE Control count of number of segments in a message The count shall include the message header segment (UNH) and the message trailer segment (UNT).	M n..6	M
0062		MESSAGE REFERENCE NUMBER Unique message reference assigned by the sender. Must be unique in conjunction with 0020 values in UNB. The reference number assigned should be unique not only within a single interchange but across many interchanges from the same sender for a sufficient time to avoid any confusion.	M an..14	M