

VOLVO

Volvo Car Corporation

Application Of Odette

DELINS

9308 (2007-04-11)

Volvo Car Corporation

Dept 82300

405 31 GOTHENBURG

Content

1. General	2
2. Description of how DELINS are used at different units at Volvo Car	2
3. Examples of application	3
4. Detailed application	4
5. DELINS Delivery Instruction.....	5

Application of delivery schedule (DELINS Version 3) within Volvo Car

1. General

This document describes Volvo's application of the Odette DELINS message.

The specification offers a detailed description of those data elements that will be used.

The basis of this application is the Odette message entitled DELINS version 3, issued by the secretariat in June 1990.

The frequency and scope of the delivery schedules are specific for each company within Volvo.

2. Description of how DELINS are used at different units at Volvo Car

ID	Code:	When to deliver:
BP2TC	4 & 1	Forecast at 4 and deliver at 1
BP2TD	4	When the day is reached
BP2TF	4 & 1	When the day is reached
BP2TG	4 & 1	Forecast at 4 and deliver at 1
BP2TH	4	When the day is reached
BP2TU	4	When the day is reached
BP2TW	3 4 & 1	When the day is reached Forecast at 4 and deliver at 1
BSB5A	4 & 3	Forecast at 4 and deliver at 3
BS8CA	4	When the day is reached
BS8CB	4 & 1	Forecast at 4 and deliver at 1
BSNRA	9	When the day is reached
C7CUL	4 & 1	Forecast at 4 and deliver at 1
S7VVA	4	When the day is reached

3. Examples of application

A delivery schedule for supplier 12345 for delivery of article 1234567 to Volvo Car Uddevalla SWEDEN with a horizon of 60 weeks.

UNH+1144296+DELINS:3::OD'	Message header
MID+200103010118+010301'	Date when the document is issued.
SDT+:::1ABCD'	Volvo Car's number on the supplier
BDT+:::ESWVC4'	The supplier's number on Volvo Car
ARI+1+010301'	Date on which specified event becomes effective
CSG+:VOLVO CARS:::S7VVA+445+445 M1'	Volvo Car unit, name, number, delivery address and final unloading point.
ARD+1234567++123412345445+++'	Article number and order number.
PDI+200102220119'	Date for previous delivery schedule
SAD+1'	1 = Replace the previous delivery instruction.
DST+010301+:210+0'	Date on which the calculation is made and accumulated quantity.
PDN+110197:010220+30:30'	Number, date and quantity of the previous despatch notes.
PDN+108375:010213+30:30'	Number, date and quantity of the previous despatch notes.
PDN+108089:010212+30:30'	Number, date and quantity of the previous despatch notes.
DEL+010305:0000+60::3:1'	Backorder quantity.
DEL+010306:0000+30:::4'	Delivery instruction
DEL+010312:0000+30:::4'	Delivery instruction
DEL+010315:0000+30:::4'	Delivery instruction
DEL+010327:0000+30:::4'	Delivery instruction
DEL+010403:0000+30:::4'	Delivery instruction
DEL+010417:0000+30:::4'	Delivery instruction
DEL+010424:0000+30:::4'	Delivery instruction
DEL+010507:0000+30:::4'	Delivery instruction
DEL+010508:0000+30:::4'	Delivery instruction
DEL+010515:0000+30:::4'	Delivery instruction
DEL+010521:0000+30:::4'	Delivery instruction
DEL+010529:0000+30:::4'	Delivery instruction
DEL+010605:0000+30:::4'	Delivery instruction
DEL+010612:0000+30:::4'	Delivery instruction
DEL+010626:0000+30:::4'	Delivery instruction
DEL+010807:0000+30:::4'	Delivery instruction
DEL+010821:0000+30:::4'	Delivery instruction
DEL+010911:0000+30:::4'	Delivery instruction
DEL+010925:0000+30:::4'	Delivery instruction
DEL+011016:0000+30:::4'	Delivery instruction
DEL+011030:0000+30:::4'	Delivery instruction
DEL+011120:0000+30:::4'	Delivery instruction
DEL+011213:0000+30:::4'	Delivery instruction
DEL+020205:0000+30:::4'	Delivery instruction
DEL+020312:0000+15:::4'	Delivery instruction
UNT+40+1144296'	Service segment

4. Detailed application

The following section includes only those segments and data elements, which are included in Volvo's DELINS file.

Segments

Under each segment heading, we are giving instructions of when we use it.

Some segments will only be present after special agreement.

Data elements and component element

Under each element heading we specify the valid conditions.

5. DELINS Delivery Instruction

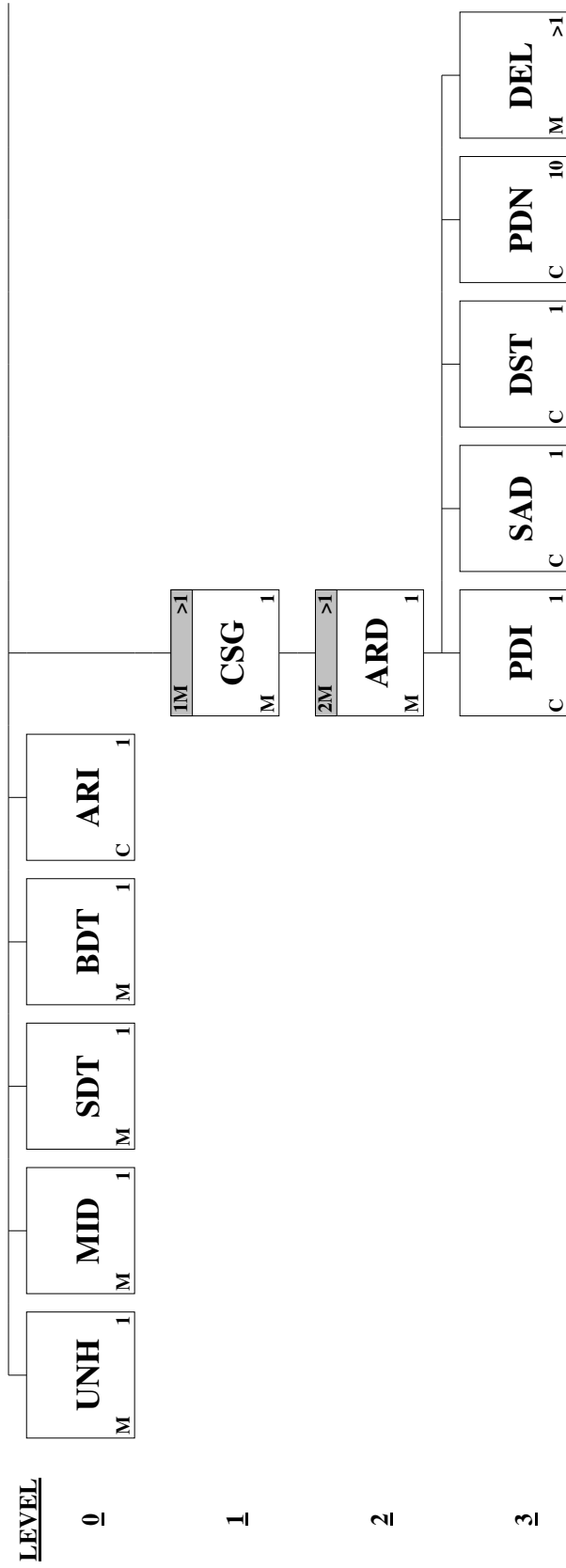
DELINS Delivery Instruction

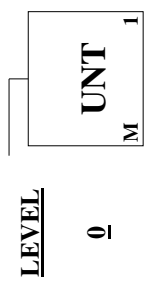
Introduction:

A message by means of which a buyer provides information regarding details for both short term delivery instructions and medium to long term requirements for planning purposes according to conditions set out in a contract or order.

Heading Section:

<u>Page No.</u>	<u>Pos. No.</u>	<u>Seg. ID</u>	<u>Name</u>	<u>Base Status</u>	<u>User Status</u>	<u>Max.Use</u>	<u>Group Repeat</u>	<u>Notes and Comments</u>
8	010	UNH	Message Header	M	M	1		
9	020	MID	Message Identification	M	M	1		
10	030	SDT	Seller Details	M	M	1		
11	050	BDT	Buyer Details	M	M	1		
12	060	ARI	Additional Release Information	C	R	1		
Segment Group 1: CSG-SG2				M	M		>1	
14	070	CSG	Consignee Details	M	M	1		
Segment Group 2: ARD-PDI-SAD-DST-PDN-DEL				M	M		>1	
16	090	ARD	Article Details	M	M	1		
17	100	PDI	Previous Delivery Instruction	C		1		
18	110	SAD	Supplementary Article Details	C	R	1		
19	130	DST	Delivery Status	C	R	1		
20	140	PDN	Previous Despatch Notes	C		10		
21	160	DEL	Delivery Details	M	M	>1		
22	210	UNT	Message Trailer	M	M	1		





Segment: UNH Message Header
Position: 010
Group:
Level: 0
Usage: Mandatory
Max Use: 1
Purpose: To head, identify and specify a message.
Comments:
Notes: Example: UNH+1147493+DELINS:3::OD'

Data Element Summary

<u>Data Element</u>	<u>Component Element</u>	<u>Name</u>	<u>Base Attributes</u>	<u>User Attributes</u>
0062		MESSAGE REFERENCE NUMBER Unique message reference assigned by the sender. Must be unique in conjunction with 0020 values in UNB. The reference number assigned should be unique not only within a single interchange but across many interchanges from the same sender for a sufficient time to avoid any confusion.	M an..14	M
S009		MESSAGE IDENTIFIER Identification of the type, version etc. of the message being interchanged.	M	M
	0065	Message type identifier Code identifying a type of message and assigned by its controlling agency. Refer to individual ODETTE message specifications.	M an..14	M an..6
	0052	Message Version Number Version number of a message type.	M n..3	M
	0051	Controlling Agency Code identifying the agency controlling the specification, maintenance and publication of the message type. Use OD for ODETTE. OD Odette	C an..2	

Segment: **MID** Message Identification
Position: 020
Group:
Level: 0
Usage: Mandatory
Max Use: 1
Purpose: Segment which must contain the unique reference number of the basic data message and the date/time of its generation.
 If there is concern about the validity of the message, a mutually agreed system of authentication may be implemented by the use of tag 4426.

Comments:
Notes: Example: MID+200103020136+010302'

Data Element Summary

<u>Data Element</u>	<u>Component Element</u>	<u>Name</u>	<u>Base Attributes</u>	<u>User Attributes</u>
1004	Composite	DOCUMENT NUMBER	M an..17	M
		Reference number assigned to the document by the issuer.		
2007	Composite	DOCUMENT DATE AND TIME	M	M
		Document Date, coded	C n6	R
		Date when the document is issued and - when appropriate -signed or otherwise authenticated.		
		Format YYMMDD		

Segment: **SDT** Seller Details
Position: 030
Group:
Level: 0
Usage: Mandatory
Max Use: 1
Purpose: Segment which gives details of the seller. A coded or uncoded name and address must be included.
Commercial, accounting and/or other contact details may be added when required for future reference.

Comments:
Notes: Example: SDT+:::1ABCD'

Data Element Summary

<u>Data Element</u>	<u>Component Element</u>	<u>Name</u>	<u>Base Attributes</u>	<u>User Attributes</u>
Composite	3296	SELLER Internal Identification Number allocated to a Trading Partner Internal Identification Number allocated to a Trading Partner. Supplier Code, provided by Consignee.	M C an..17	M R an5

Segment: **BDT** Buyer Details
Position: 050
Group:
Level: 0
Usage: Mandatory
Max Use: 1
Purpose: Segment which gives details of the buyer. A coded or uncoded name and address must be included.
 Commercial, accounting and/or other contact details may be added when required for future reference.

Comments:
Notes: Example: BDT+:::ESWVC4'

Data Element Summary

<u>Data Element</u>	<u>Component Element</u>	<u>Name</u>	<u>Base Attributes</u>	<u>User Attributes</u>
Composite		BUYER	M	M
	3296	Internal Identification Number allocated to a Trading Partner	C an..17	R an..10
		Identification of a type of document/message by code or name. Code preferred.		
		Internal Identification Number allocated to a Trading Partner.		
		The customer number issued by the supplier.		

Segment: **ARI** Additional Release Information
Position: 060
Group:
Level: 0
Usage: Conditional (Required)
Max Use: 1
Purpose: Segment which gives effective from/to dates indicating the validity period of the whole message, and which indicates what action should be taken by the dates given in specific schedules. Effective from/to dates must be used when previous instructions are to be amended and a matching key is not available for use within the DEL segment.

Comments:

Notes: Example: ARI+1+010306:010419'

Data Element Summary

<u>Data Element</u>	<u>Component Element</u>	<u>Name</u>	<u>Base Attributes</u>	<u>User Attributes</u>
7903		RELEASE TYPE CODE	C n1	R
		Code which identifies the action required by the dates and times indicated in the Delivery Instruction.		
		1 Ship by		
		2 Receive by		
		3 In manufacturing by		
		4 Availability date at freight distribution centre		
Composite	2069	DELIVERY INSTRUCTION VALIDITY Effective From Date, coded	C M n6	M
		Date on which specified event or document becomes effective.		
		Format YYMMDD.		

Group: **CSG** Segment Group 1
Position: 070
Group:
Level: 1
Usage: Mandatory
Max Use: >1

Segment Summary

	Pos.	Seg.		Req.	Max.
	Group:				
	No.	ID	Name	Des.	Use
	Repeat				
M	070	CSG	Consignee Details	M	1
			Segment Group 2	M	>1

Segment: **CSG** Consignee Details
Position: 070 (Trigger Segment)
Group: Segment Group 1 Mandatory
Level: 1
Usage: Mandatory
Max Use: 1
Purpose: Segment which provides details of the final consignee. Note that this is not necessarily the party taking delivery of the goods (e.g. where the goods are to be held by a grouping centre or third party warehouse). A coded or uncoded name and/or address must be included. For further details about the identification of delivery locations see the general Odette Introduction to Messages, (found in Volume 4, Section 1 of the official Odette manuals).

Comments:

Notes: Example: CSG+:VOLVO CARS::::S7VVA+445+445 M1'

Data Element Summary

<u>Data Element</u>	<u>Component Element</u>	<u>Name</u>	<u>Base Attributes</u>	<u>User Attributes</u>	
Composite		CONSIGNEE	M		
	3036	Party name Name of a party involved in a transaction. Shall be printed on the transport label in the field "Receiver".	C an..35		
Composite	3296	Internal Identification Number allocated to a Trading Partner Internal Identification Number allocated to a Trading Partner. BP2TC Knock Down Operation, Maastricht BP2TD Body Plant, Torslanda BP2TE Chassis Centre, Torslanda BP2TF Special Vehicles, Torslanda BP2TG Engine Centre, Torslanda BP2TH Assembly Plant, Torslanda BP2TU Pilot Plant, Torslanda BP2TW Customer Service, Torslanda BS8CA Assembly Plant, Gent BS8CB Engine Center, Gent BSB5A Engine, Floby BSNRA Body Plant, Olofström C7CUL Engine Plant, Skövde S7VVA Assembly plant, Uddevalla	C an..17	R an5	
		FINAL DELIVERY POINT	C	R	
	3921	Final Delivery Point, coded Detailed location within a place of delivery where goods should be unloaded. Delivery address, which is not stated on the transport label.	C an..17	R an..8	
	Composite		ADDITIONAL DESTINATION DETAILS	C	R
		3923	Additional Destination Details, coded Additional detailed information on the location within an organisational entity where goods should be unloaded. Final delivery point. To be printed on the transport label in the field "Dock and Gate". Note: This field can differ from one plan to another.	C an..17	R an..12

Group: **ARD** Segment Group 2
Position: 090
Group: Segment Group 1 Mandatory
Level: 2
Usage: Mandatory
Max Use: >1

Segment Summary

	Pos.	Seg.		Req.	Max.
	Group:				
	No.	ID	Name	Des.	Use
	Repeat				
M	090	ARD	Article Details	M	1
	100	PDI	Previous Delivery Instruction	C	1
R	110	SAD	Supplementary Article Details	C	1
R	130	DST	Delivery Status	C	1
	140	PDN	Previous Despatch Notes	C	10
M	160	DEL	Delivery Details	M	>1

Segment: **ARD** Article Details
Position: 090 (Trigger Segment)
Group: Segment Group 2 Mandatory
Level: 2
Usage: Mandatory
Max Use: 1
Purpose:

Segment which identifies an article. The buyer's article number and the order/contract authorising delivery must be given. Three lines of free text may be used but careful consideration should be given before doing so. (See FTX segment below).

If for one delivery instruction an article is related to two different orders, two occurrences of the ARD segment are required: one for each order number. If one article is to be delivered under two different technical statuses, then two different ARD segments are required.

All segments below the Article Details segment relate to the article specified in the preceding ARD segment and may all appear at least once before the ARD segment is repeated to give details of another article.

Comments:

Notes: Example: ARD+1234567++123412345445+++PO04'

Data Element Summary

<u>Data Element</u>	<u>Component Element</u>	<u>Name</u>	<u>Base Attributes</u>	<u>User Attributes</u>
Composite		ARTICLE IDENTIFICATION	M	M
	7304	Buyer's Article Number Buyer's reference identifying articles or products. Volvo Car's article/item number, without leading zeroes or spaces.	C an..35	R an..24
Composite		ORDER OR CONTRACT IDENTIFICATION	M	M
	1022	Order Number Reference number assigned by the buyer to an order.	C an..17	R
Composite		TECHNICAL STATUS	C	
	7860	Design Revision Number Identification of a carrier by code and/or by name. Code preferred. The revision number of the design specification for an ordered article. Used after special agreement.	C an..35	an..14

Segment: **PDI** Previous Delivery Instruction
Position: 100
Group: Segment Group 2 Mandatory
Level: 3
Usage: Conditional (Optional)
Max Use: 1
Purpose: Segment containing a reference to the previous delivery instruction number in which the last schedule information for this article was transmitted and which enables the recipient to update previous schedules accurately.

Comments:

Notes: This segment will not be available in the first delivery schedule.
 Example: PDI+200103010118'

Data Element Summary

<u>Data Element</u>	<u>Component Element</u>	<u>Name</u>	<u>Base Attributes</u>	<u>User Attributes</u>
1004		DOCUMENT NUMBER	M an..17	M
		Reference number assigned to the document by the issuer.		
		Previous delivery schedule number.		

Segment: **SAD** Supplementary Article Details
Position: 110
Group: Segment Group 2 Mandatory
Level: 3
Usage: Conditional (Required)
Max Use: 1
Purpose: Segment which is used to provide additional information on the article identified in the preceding ARD segment. This segment is used to indicate if the new instruction amends or replaces the previous instruction or whether it is used as a call-off request (tag 7807).

Comments:

Notes: Example SAD+1'

Data Element Summary

<u>Data Element</u>	<u>Component Element</u>	<u>Name</u>	<u>Base Attributes</u>	<u>User Attributes</u>
7807		INSTRUCTION UPDATE ACTION CODE	M n1	M
		Code indicating action required as a result of a new instruction.		
		1		Replace previous instruction from the date and time indicated

Segment: **DST** Delivery Status
Position: 130
Group: Segment Group 2 Mandatory
Level: 3
Usage: Conditional (Required)
Max Use: 1
Purpose: Segment which contains reconciliation data necessary for the buyer and seller to have a common understanding of the quantities received/scheduled for the article identified in the preceding ARD segment. Quantitative information and its date/time of calculation are available.

Comments:

Notes: Example: DST+010306+:210:0'

Data Element Summary

<u>Data Element</u>	<u>Component Element</u>	<u>Name</u>	<u>Base Attributes</u>	<u>User Attributes</u>
Composite		CALCULATION DATE AND TIME	M	M
	2253	Calculation Date, coded Date on which the calculation is made. Reconciliation date for delivery schedule. Format YYYYMMDD.	M n6	M
		CUMULATIVE QUANTITY Accumulated deliveries from 1/1.	C	R
Composite	6804	Actual Cumulative Quantity Received Actual cumulative quantity received by the consignee from the accumulation start date. If no deliveries gives zero.	C n..10	R
	6812	QUANTITY BALANCE Difference between quantity ordered and quantity received. For positive values, the quantity ordered is greater than the quantity received. For contract orders, the quantity ordered. Used by BP2TW (Customer Service).	C n..10	

Segment: **PDN** Previous Despatch Notes
Position: 140
Group: Segment Group 2 Mandatory
Level: 3
Usage: Conditional (Optional)
Max Use: 10
Purpose: Contains despatch note references for deliveries received and processed by the consignee up to the date/time of calculation by the buyer for the article identified in the preceding ARD segment. See 2.5.3 above. The sequence in which despatch note details are transmitted should be agreed between partners (e.g. latest date first). This information can be used by the seller to clarify which deliveries have been included in the quantities calculated by the buyer.

Comments:

Notes: This segment will be omitted if no despatch is received.
 Example: PDN+110197:010220+30:30'
 PDN+108375:010213+30:30'
 PDN+108089:010212+30:30'

Data Element Summary

<u>Data Element</u>	<u>Component Element</u>	<u>Name</u>	<u>Base Attributes</u>	<u>User Attributes</u>
Composite		DESPATCH NOTE	M	M
	1128	Despatch Note Number Reference number assigned by the seller to a Despatch Note.	C an..17	an..8
	2219	Despatch Note Date, coded Date when a despatch note is issued. Format YYMMDD	C n6	
Composite		QUANTITY DELIVERED / RECEIVED	C	
	6270	Quantity Delivered Quantity delivered by the seller on which the article item amount is calculated. The quantity delivered according to AVIEXP/delivery note.	C n..10	
	6872	Despatch Note Quantity Received Actual quantity received by the consignee. This data can be used when received quantity differ from deliveries quantity according to the despatch note.	C n..10	

Segment: **DEL** Delivery Details
Position: 160
Group: Segment Group 2 Mandatory
Level: 3
Usage: Mandatory
Max Use: >1
Purpose: In this segment the buyer will specify, for the article identified in the preceding ARD segment, the quantity required with associated times and dates. Provision is made in tag 6811 to indicate level of commitment (if not used in the SID segment). A specific date or a time interval must be given, as must a quantity.

Comments:

Notes: Example: DEL+010305:0000+60::3:1'
DEL+010306:0000+30:::4'

Data Element Summary

<u>Data Element</u>	<u>Component Element</u>	<u>Name</u>	<u>Base Attributes</u>	<u>User Attributes</u>
Composite		DATE, TIME, PERIODS	M	M
	2803	First Date, coded The starting date of a time period. Format YYYYMMDD.	C n6	R
	2002	Time Time of the day based on the 24 hours timekeeping system. This data element will only be used when there are more than one call-off during one day. Format HHMM	C n4	
	2805	Last Date, coded The end date of a time period. This data element will only be used for deliveries for which the day is not specified. Format YYYYMMDD	C n6	
Composite		QUANTITIES, STATUS, DELIVERY	M	M
	6060	Quantity Numeric value of a quantity. On the first occasion an article entirely lacks a call-off, a delivery schedule with quantity = 0 is sent. After this, no delivery schedule will be sent until a new requirement occurs for this article.	M n..15	M
	1310	Part Consignment Number Reference to a specific consignment forming part of a contract allowing part deliveries. After special agreement with Volvo Car, a reference is made here to an order line or other customer-oriented reference concept.	C an..17	
	7803	Delivery Instruction Reason, coded Code identifying the reason for the delivery instruction. 3 Back order	C n1	
	6811	Schedule Status Indicator Code indicating the level of commitment of a delivery instruction. Note. Used different between Volvo Cars units/plants	C n1	R
		1 Firm order		
		3 Raw material only		
		4 Forecast		
		9 Reference to commercial agreement between partners		

Segment: **UNT** Message Trailer
Position: 210
Group:
Level: 0
Usage: Mandatory
Max Use: 1
Purpose: Message Trailer
Comments:

Data Element Summary

<u>Data Element</u>	<u>Component Element</u>	<u>Name</u>	<u>Base Attributes</u>	<u>User Attributes</u>
0074		NUMBER OF SEGMENTS IN A MESSAGE Control count of number of segments in a message The count shall include the message header segment (UNH) and the message trailer segment (UNT).	M n..6	M
0062		MESSAGE REFERENCE NUMBER Unique message reference assigned by the sender. Must be unique in conjunction with 0020 values in UNB. The reference number assigned should be unique not only within a single interchange but across many interchanges from the same sender for a sufficient time to avoid any confusion.	M an..14	M