



## **Application Of Odette / EDIFACT**

**DESADV**  
9805 (2009-01-08)

Volvo Car Corporation  
Dept 82300

405 31 GOTHENBURG



## Contents

Contents.....	1
Detailed Guidelines of Despatch Advice DESADV within Volvo Car .....	2
1 General .....	2
2 The purpose and basic function of the message.....	2
3 DESADV vis-à-vis Document.....	3
4 Creation of a DESADV .....	3
5 Header- and Party-Segment Description .....	4
6 Segment Description of Package .....	5
7 Segment Description of the Article Level .....	6
8 Detailed Information about Packaging .....	7
9. DESADV Reference to the Odette transport Label (OTL).....	8
10. Examples of application .....	9
11 DESADV Dispatch Advice Message .....	13



## Detailed Guidelines of Dispatch Advice DESADV within Volvo Car

### *1 General*

This document describes Volvo's application of Odette subset of EDIFACT message for dispatch advice (DESADV).

The specification offers a detailed description of those data elements that will be used.

The basis of this application is the Odette subset of EDIFACT message entitled AVIEXP/DESADV V5R1 based on D96A issued by the secretariat in October 1996.

For information listed below see the "Technical annexe to the frame agreement for deliveries to Volvo Car" regarding:

- General information
- Explanation of codes used in the segment description.
- General arrangement
- Communication
- Application of ISO/EDIFACT
- Service segments
- Instruction for implementation

### *2 The purpose and basic function of the message*

The purpose of the DESADV is to provide the ultimate consignee of the goods with detailed information relating to the actual contents of a shipment sent by a consignor. The message is based upon the definition of a shipment as a specified amount of goods sent by a specified consignor to a specified consignee on a specific occasion.

Notification is to be given of deliveries to all Volvo units.

The message gives the following information:

To state the actual time for shipment:

To provide specific information concerning transportation.

To specify the actual packages and handling units in the shipment.

To specify the contents of the shipment.

To provide the necessary documentation for customs clearance.



### ***3 DESADV vis-à-vis Document***

The contents and structure of the DESADV message corresponds to the Dispatch Advice document for domestic despatches, and to the invoice/dispatch advice for border crossing despatches.

DESADV will progressively replace the paper documents as the operative source of information. But during a transition period, despatch advice and the corresponding documents will be used in parallel.

### ***4 Creation of a DESADV***

A DESADV shall state the actual contents of a shipment.

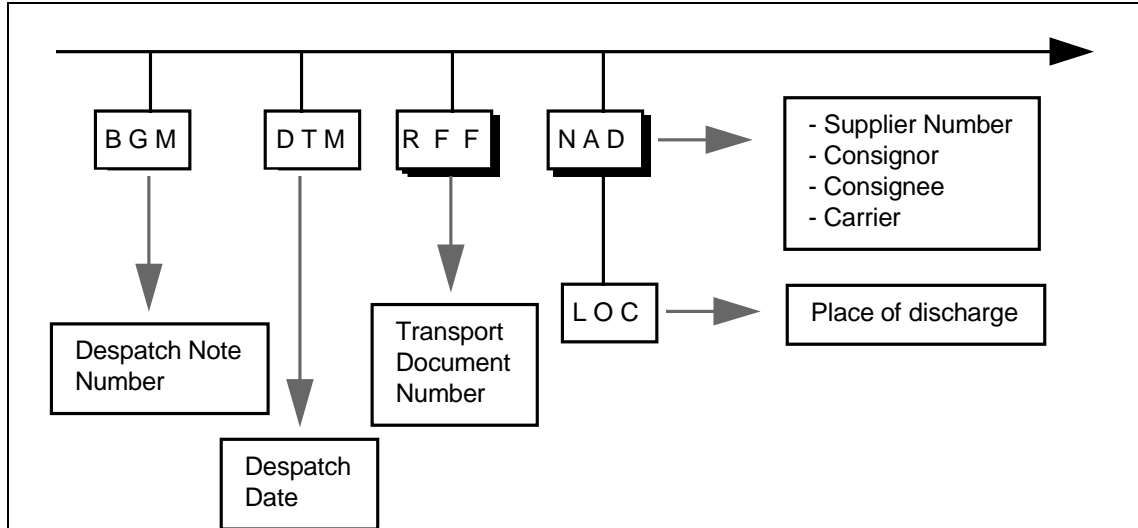
Notification must therefore not be made until the actual loading procedure is completed and **no later than one hour after the goods have been shipped.**

All articles from one consignor to one place of discharge on one and the same delivery occasion shall be specified on one and the same DESADV.

In the event that the quantity of goods defined in a particular despatch is too large to be accommodated in its entirety on one vehicle/trailer/container etc. It is necessary to redefine the shipment so it relates only to the vehicle/trailer/container etc. on which it is being transported.



### 5 Header- and Party-Segment Description

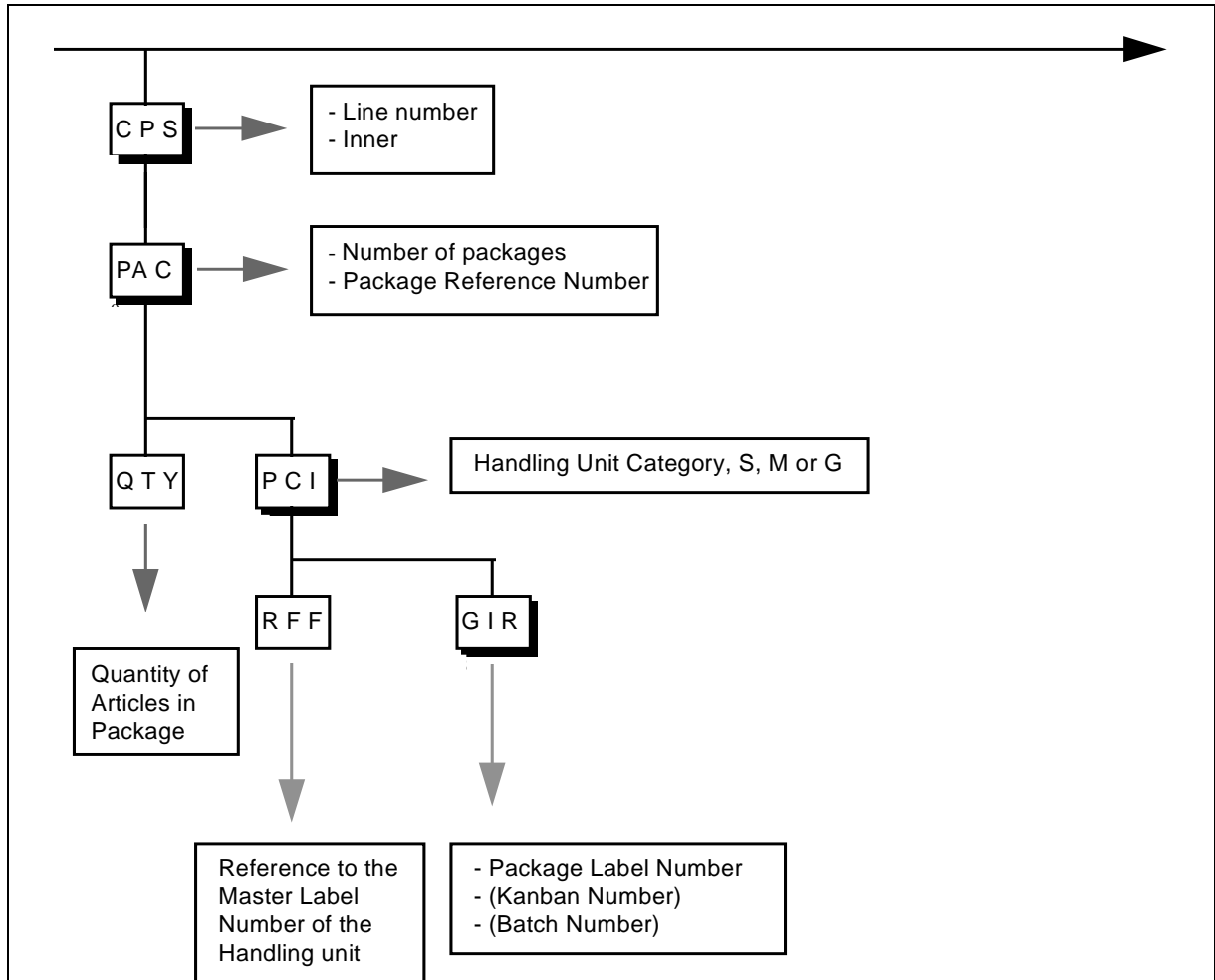


One message can only consist of one Dispatch Note Number (DESADV-number).

ALL articles to one Place of Discharge should be on ONE Dispatch Note (DESADV).

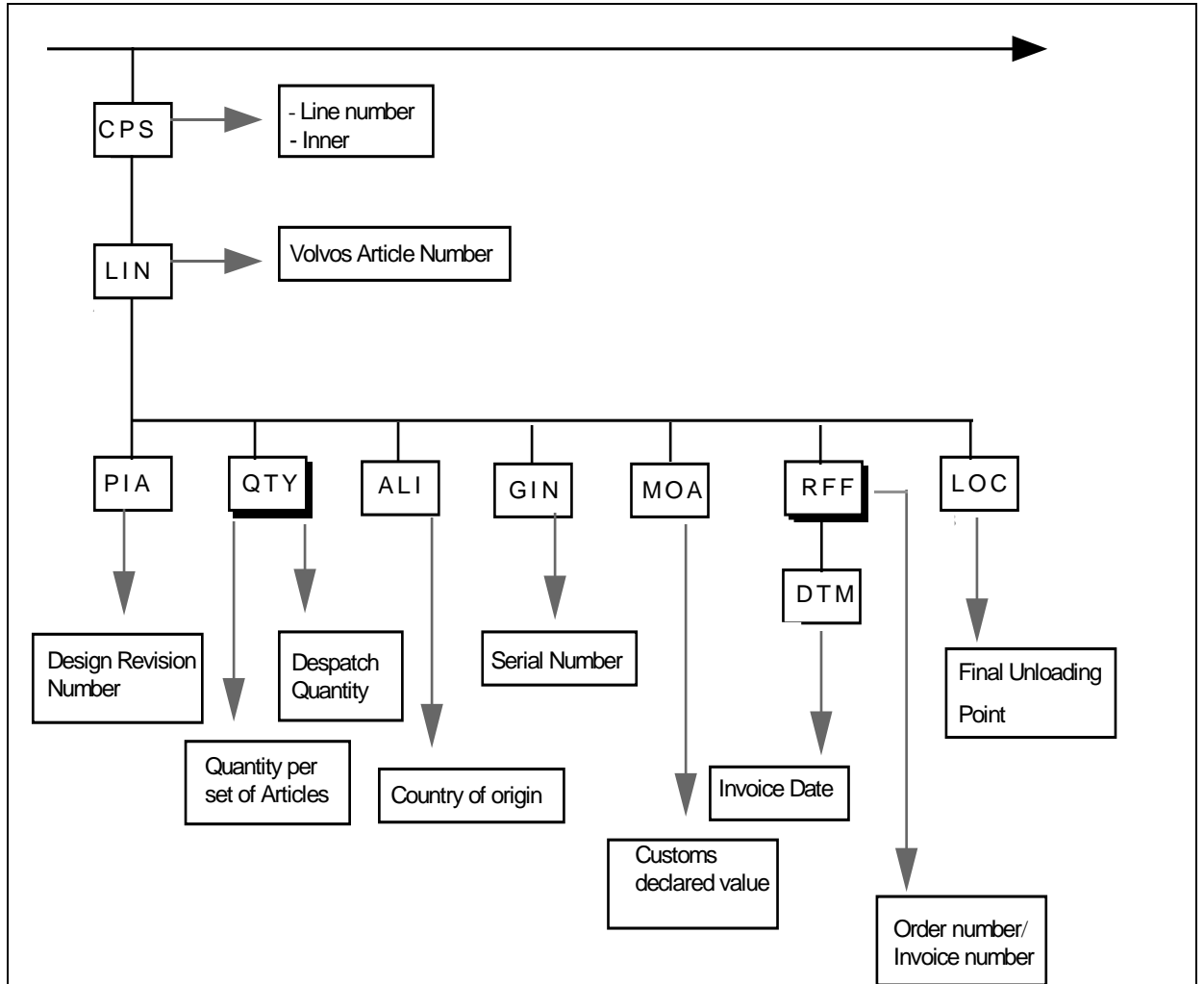


### 6 Segment Description of Package





*7 Segment Description of the Article Level*





## ***8 Detailed Information about Packaging***

This part of the DESADV is rather complicated. Therefore we will try to make some clarifications in this chapter and also in the examples in the next chapter.

### **8.1 Package and Handling Unit** (Two key expressions concerning the packaging)

- **Package Unit**

A unit in which the article itself is loaded.

- **Handling Unit**

A device which can be handled physically (e.g. pallet) and may carry one or several packages. Handling Units can be differentiated:

**Simplified Handling Unit (S)**

Consists of one package which is a handling unit at the same time.

**Non Simplified Handling Unit (M & G)**

Consists of one or more packages which are not handling units at the same time. Non-Simplified Handling Unit can be of two kinds:

**Homogenous Handling Unit (M)**

Consists of one unique article number.

**Mixed Handling Unit (G)**

Consists of more than one article number.



### 9. DESADV Reference to the Odette transport Label (OTL)

Odette Transport Label		DESADV						
Data Element	Label ID Code	Entity	Attribute	Segment	Segment Group	Data Element	Data Element Qualifier	Qualifier
Receiver		Consignee	Name of Consignee	NAD	2	3036	3035	CN
Dock/Gate		Location	Additional Internal destination	LOC	18	3225	3227	159
Advice Note Number	N	Message	Despatch advice	BGM		1004	1001	351
Supplier Address								
Net Weight								
Gross Weight								
No. Boxes								
Part Number	P	Scheduled Part	Part Number	LIN	15	7140	7143	IN
Quantity	Q	Group of packages	Despatch quantity	QTY	15	6060	6063	12
Unit Of Measurement		Group of packages	Quantity per pack	QTY	11	6060	6063	52
Description								
Logistic Reference Area								
Supplier ID	V	Consignor	Consignor's ID	NAD	2	3039	3035	CZ
Date								
Engineering Change		Article	Engineering change number	PIA	15	7140	7143	DR
Serial Number (1/2)	S	individual handling unit	Handling unit category	PCI	13	7511		
Serial Number (2/2)		Individual package	Package label number	GIR	13	7402	7297	3
Master Label Number (1/2)	M or G	individual handling unit	Handling unit category	PCI	13	7511		
Master Label Number (2/2)		individual handling unit	Transport label unit	RFF	13	1154	1153	AAT
Batch Number	H	Production Batch	Batch number	GIR	13	7402	7405	BX

DELINS – CSG 3036	Receiver <b>VOLVO TORSLANDA MONTERING</b>	Dock / Gate <b>TVV</b>	AVIEXP – CSG 3923 DELINS – CSG 3923
AVIEXP – MID 1004 DELINS – PDN 1128	Advice Note No (N) <b>113776</b> 	Supplier address <b>SUPPLIER NAME</b>	
	Net Weight (Kg) <b>123</b>	Gross weight (Kg) <b>123</b>	No. of boxes <b>1</b>
AVIEXP – ARD 7304 DELINS – ARD 7304	Part Number (P) <b>1234567</b> 		
AVIEXP – ARD 6270* AVIEXP – TCO 6853*	Quantity (Q) <b>12</b> 	Description <b>ITEM 1</b>	
AVIEXP – CDT 3296** AVIEXP – SDT 3296** DELINS – SDT 3296	Supplier ID (V) <b>ABCD1</b> 	Logistic Reference	
AVIEXP – NCO 7102 (S)*** AVIEXP – NCO 7246 (M/G)***	Serial Number (S) <b>123</b> 	Date <b>D010306</b> Eng. Change	
	Batch No (H) <b>456789001</b> 		AVIEXP – ADP 7338

\* Depending on Transport Package structure, see chapter 9.  
 \*\* Depending if the Manufacturing site and Shipping site has been allocated different Supplier ID. See Purchase Order.  
 \*\*\* Depending on Transport Package structure, see chapter 9.

Remarks:

- All fields must be without leading zeroes or spaces
- All information in barcode, must begin with adequate label id code. (e.g. N113776, P1234567, Q128, VABCD1 AND S123)
- Detailed Information of the LABEL to be found in:  
 "Application Of Odette Transport Label Vers.1 Rev 4  
 at <http://www.volvo.com/volvoit/edi/en-gb/vcc/specifications/>



## 10. Examples of application

**Odette reference for simplified handling unit (S). Consists of one package which is a handling unit at the same time.**

On March 6th, Volvo's supplier ABCD1 has one outgoing delivery of a product with article number 1234567, to be delivered to Volvo Cars, Plant Volvo Torlanda Montering, and Dock/gate TVV.

The products are packed in packages of 128 on an L-pallet with four frames and a lid.

Carrier CARGOCARE makes delivery to Volvo Cars directly to the specified delivery address.

With the current syntax rules and in accordance with Volvo's specification, the notification is as follows:

UNH+00001+DESADV:D:96A:UN:A01051'	Message header
BGM+351+113776'	351 = Despatch advice
DTM+137:200103061219:203'	137 = Document/message date/time
RFF+AAS:CMR1234941030'	AAS = Transport document number
RFF+CRN:987654321'	CRN = Conveyance reference number
NAD+CZ+ABCD1::92'	CZ = Consignor
NAD+SE+ABCD2::92'	SE = Seller. Used if Seller and Consignor has different supplier id.
NAD+CN+BP2TH::92'	CN = Consignee
LOC+11+TVV::92'	11 = Place/port of discharge
NAD+CA+CARGOCARE::92'	CA = Carrier
CPS+1++1'	Hierarchical id. number and 1 = inner packing
PAC+2++NIL::92'	Number of packages and package reference number.
QTY+52:128:PCE'	52 = Quantity per pack
PCI++++S::92'	S = Simplified handling unit
GIR+3+123:ML'	3 = Package. ML = Marking/Label number
GIR+3+124:ML'	3 = Package. ML = Marking/Label number
LIN+++1234567:IN++0'	IN = Buyers article/item number. 0 = Single article package case
PIA+1+P04:DR'	1 = Additional identification. DR = Drawing revision number
QTY+12:256:PCE'	12 = Despatch quantity
ALI+UK'	Country of origin
RFF+ON:123412345445'	ON = Order number
LOC+159+TVV::92'	159 = Additional internal destination
UNT+23+00001'	Message trailer



**Odette reference for homogenous handling unit (M). Small boxes containing the same article number.**

On March 6th, Volvo’s supplier ABCD1 has one outgoing delivery of a product with article number 1234567, to be delivered to Volvo Cars, Plant Volvo Torslanda Montering and Dock/Gate TVV.

The products are packed in 16 small boxes of 56 pieces in each on an L-pallet and a lid.

Carrier CARGOCARE makes delivery to Volvo Cars directly to the specified delivery address.

With the current syntax rules and in accordance with Volvo’s specification, the notification is as follows:

UNH+00001+DESADV:D:96A:UN:A01051'	Message header
BGM+351+113776'	351 = Despatch advice
DTM+137:200103061219:203'	137 = Document/message date/time
RFF+AAS:CMR1234941030'	AAS = Transport document number
RFF+CRN:987654321'	CRN = Conveyance reference number
NAD+CZ+ABCD1::92'	CZ = Consignor
NAD+SE+ABCD2::92'	SE = Seller. Used if Seller and Consignor has different supplier id.
NAD+CN+BP2TH::92'	CN = Consignee
LOC+11+TVV::92'	11 = Place/port of discharge
NAD+CA+CARGOCARE::92'	CA = Carrier
CPS+1++1'	Hierarchical id. number and 1 = inner packing
PAC+16++NIL::92'	Number of packages and package reference number.
QTY+52:56:PCE'	52 = Quantity per pack
PCI+++M::92'	M = Homogenous handling unit
RFF+AAT:191'	AAT = Master label number
GIR+3+11:ML'	3 = Package. ML = Marking/Label number
GIR+3+12:ML'	3 = Package. ML = Marking/Label number
GIR+3+13:ML'	3 = Package. ML = Marking/Label number
GIR+3+14:ML'	3 = Package. ML = Marking/Label number
GIR+3+15:ML'	3 = Package. ML = Marking/Label number
GIR+3+16:ML'	3 = Package. ML = Marking/Label number
GIR+3+17:ML'	3 = Package. ML = Marking/Label number
GIR+3+18:ML'	3 = Package. ML = Marking/Label number
GIR+3+19:ML'	3 = Package. ML = Marking/Label number
GIR+3+20:ML'	3 = Package. ML = Marking/Label number
GIR+3+21:ML'	3 = Package. ML = Marking/Label number
GIR+3+22:ML'	3 = Package. ML = Marking/Label number
GIR+3+23:ML'	3 = Package. ML = Marking/Label number
GIR+3+24:ML'	3 = Package. ML = Marking/Label number
GIR+3+25:ML'	3 = Package. ML = Marking/Label number
GIR+3+26:ML'	3 = Package. ML = Marking/Label number
LIN+++1234567:IN++0'	IN = Buyers article/item number. 0 = Single article package case
PIA+1+P04:DR'	1 = Additional identification. DR = Drawing revision number
QTY+12:896:PCE'	12 = Despatch quantity
ALI+UK'	Country of origin
RFF+ON:123412345445'	ON = Order number
LOC+159+TVV::92'	159 = Additional internal destination
UNT+38+00001'	Message trailer



**Odette reference for mixed handling unit (G). Small boxes containing different article number.**

On March 6th, Volvo's supplier ABCD1 has one outgoing delivery of products with article numbers 1234567 and 1234568, to be delivered to Volvo, Plant Volvo Torslanda Montering and Dock/Gate TVV.

The article 1234567 is packed in 8 small boxes of 112 pieces in each and the article 1234568 is packed in 8 small boxes of 56 pieces in each; on an L-pallet and a lid.

Carrier CARGOCARE makes delivery to Volvo Cars directly to the specified delivery address.

With the current syntax rules and in accordance with Volvo's specification, the notification is as follows:

UNH+00001+DESADV:D:96A:UN:A01051'	Message header
BGM+351+113776'	351 = Despatch advice
DTM+137:200103061219:203'	137 = Document/message date/time
RFF+AAS:CMR1234941030'	AAS = Transport document number
RFF+CRN:987654321'	CRN = Conveyance reference number
NAD+CZ+ABCD1::92'	CZ = Consignor
NAD+SE+ABCD2::92'	SE = Seller. Used if Seller and Consignor has different supplier id.
NAD+CN+BP2TH::92'	CN = Consignee
LOC+11+TVV::92'	11 = Place/port of discharge
NAD+CA+CARGOCARE::92'	CA = Carrier
CPS+1++1'	Hierarchical id. number and 1 = inner packing
PAC+8++NIL::92'	Number of packages and package reference number.
QTY+52:112:PCE'	52 = Quantity per pack
PCI+++G::92'	G = Mixed handling unit
RFF+AAT:137'	AAT = Master label number
GIR+3+512:ML'	3 = Package. ML = Marking/Label number
GIR+3+513:ML'	3 = Package. ML = Marking/Label number
GIR+3+514:ML'	3 = Package. ML = Marking/Label number
GIR+3+515:ML'	3 = Package. ML = Marking/Label number
GIR+3+516:ML'	3 = Package. ML = Marking/Label number
GIR+3+517:ML'	3 = Package. ML = Marking/Label number
GIR+3+518:ML'	3 = Package. ML = Marking/Label number
GIR+3+519:ML'	3 = Package. ML = Marking/Label number
LIN+++1234567:IN++0'	IN = Buyers article/item number. 0 = Single article package case
PIA+1+P04:DR'	1 = Additional identification. DR = Drawing revision number
QTY+12:896:PCE'	12 = Despatch quantity
ALI+UK'	Country of origin
RFF+ON:123412345445'	ON = Order number
LOC+159+TVV::92'	159 = Additional internal destination
CPS+2++1'	Hierarchical id. number and 1 = inner packing
PAC+8++NIL::92'	Number of packages and package reference number.
QTY+52:56:PCE'	52 = Quantity per pack
PCI+++G::92'	G = Mixed handling unit
RFF+AAT:137'	AAT = Master label number



## Detailed Guidelines of DESADV

GIR+3+520:ML'	3 = Package. ML = Marking/Label number
GIR+3+521:ML'	3 = Package. ML = Marking/Label number
GIR+3+522:ML'	3 = Package. ML = Marking/Label number
GIR+3+523:ML'	3 = Package. ML = Marking/Label number
GIR+3+524:ML'	3 = Package. ML = Marking/Label number
GIR+3+525:ML'	3 = Package. ML = Marking/Label number
GIR+3+526:ML'	3 = Package. ML = Marking/Label number
GIR+3+527:ML'	3 = Package. ML = Marking/Label number
LIN+++1234568:IN++0'	IN = Buyers article/item number. 0 = Single article package case
PIA+1+P05:DR'	1 = Additional identification. DR = Drawing revision number
QTY+12:448:PCE'	12 = Despatch quantity
ALI+UK'	Country of origin
RFF+ON:123412345445'	ON = Order number
LOC+159+TVV::92'	159 = Additional internal destination
UNT+49+00001'	Message trailer



## 11 DESADV Dispatch Advice Message

### Introduction:

A message specifying details for goods despatched or ready for despatch under agreed conditions. The United Nations Despatch Advice Message serves both as a specification for Delivery Despatch Advice and also as a Returns Despatch Advice message. Throughout this document, the reference to 'Despatch Advice' may be interpreted as conveying the wider meaning of 'Delivery Despatch Advice/Returns Despatch Advice'.

### Heading Section:

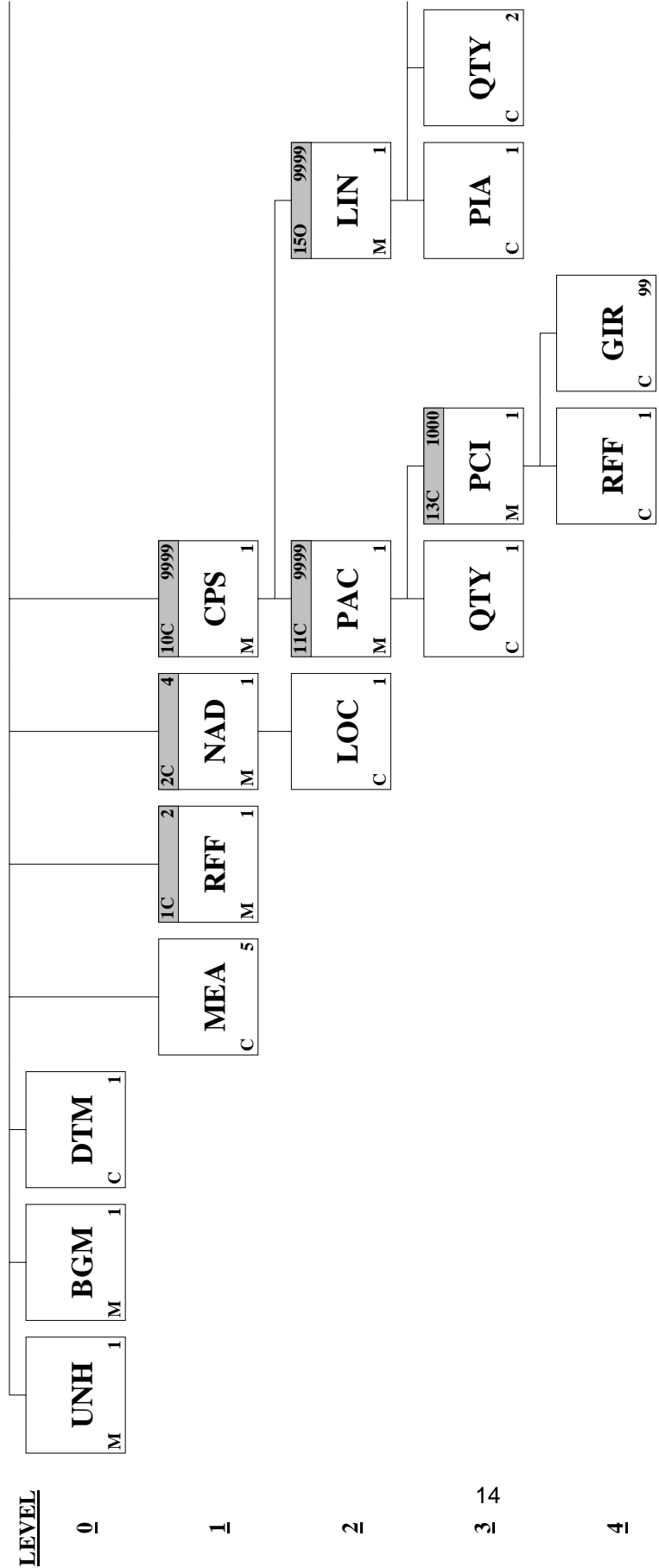
<u>Pos. No.</u>	<u>Seg. ID</u>	<u>Name</u>	<u>Base Status</u>	<u>User Status</u>	<u>Max.Use</u>	<u>Group Repeat</u>	<u>Notes and Comments</u>
0010	UNH	Message Header	M	M	1		
0020	BGM	Beginning of Message	M	M	1		
0030	DTM	Date/Time/Period	C	M	1		
0050	MEA	Measurements	C		5		
0070		Segment Group 1: RFF	C	M		2	
0080	RFF	Reference	M	M	1		
0100		Segment Group 2: NAD-LOC	C	M		4	
0110	NAD	Name and Address	M	M	1		
0120	LOC	Place/Location Identification	C	D	1		

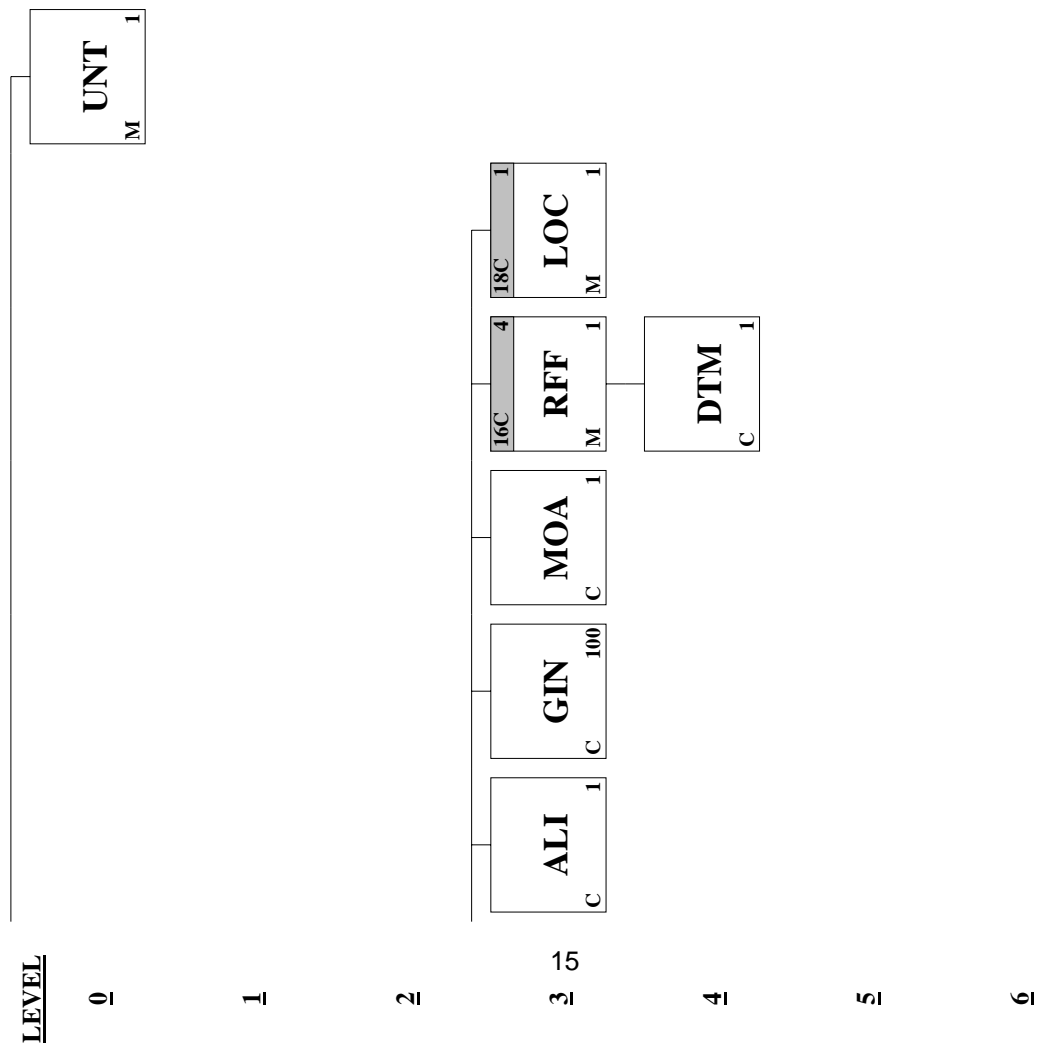
### Detail Section:

<u>Pos. No.</u>	<u>Seg. ID</u>	<u>Name</u>	<u>Base Status</u>	<u>User Status</u>	<u>Max.Use</u>	<u>Group Repeat</u>	<u>Notes and Comments</u>
0370		Segment Group 10: CPS-SG11-SG15	C	M		9999	
0380	CPS	Consignment Packing Sequence	M	M	1		
0400		Segment Group 11: PAC-QTY-SG13	C	M		9999	
0410	PAC	Package	M	M	1		
0430	QTY	Quantity	C	M	1		
0470		Segment Group 13: PCI-RFF-GIR	C	M		1000	
0480	PCI	Package Identification	M	M	1		
0490	RFF	Reference	C	D	1		
0510	GIR	Related Identification Numbers	C	M	99		
0550		Segment Group 15: LIN-PIA-QTY-ALI-GIN-MOA-SG16-SG18	O	M		9999	
0560	LIN	Line Item	M	M	1		
0570	PIA	Additional Product Id	C	D	1		
0600	QTY	Quantity	C	M	2		
0610	ALI	Additional Information	C	M	1		
0620	GIN	Goods Identity Number	C	D	100		
0670	MOA	Monetary Amount	C	D	1		
0680		Segment Group 16: RFF-DTM	C	M		4	
0690	RFF	Reference	M	M	1		
0700	DTM	Date/Time/Period	C	D	1		
0750		Segment Group 18: LOC	C	M		1	
0760	LOC	Place/Location Identification	M	M	1		

### Summary Section:

<u>Pos. No.</u>	<u>Seg. ID</u>	<u>Name</u>	<u>Base Status</u>	<u>User Status</u>	<u>Max.Use</u>	<u>Group Repeat</u>	<u>Notes and Comments</u>
0990	UNT	Message Trailer	M	M	1		







**Segment:** **UNH** Message Header  
**Position:** 0010  
**Group:**  
**Level:** 0  
**Usage:** Mandatory  
**Max Use:** 1  
**Purpose:** A service segment starting and uniquely identifying a message. The message type code for the Despatch advice message is DESADV.  
 Note: Despatch advice messages conforming to this document must contain the following data in segment UNH, composite S009:  
 Data element 0065 DESADV 0052 D 0054 96A  
 0051 UN

**Dependency Notes:**  
**Comments:**  
**Notes:**

Example: UNH+00001+DESADV:D:96A:UN:A01051'

**Data Element Summary**

<u>Data Element</u>	<u>Component Element</u>	<u>Name</u>	<u>Base Attributes</u>	<u>User Attributes</u>
0062		<b>MESSAGE REFERENCE NUMBER</b> Unique message reference assigned by the sender.	<b>M an..14</b>	<b>M</b>
S009		<b>MESSAGE IDENTIFIER</b> Identification of the type, version etc. of the message being interchanged.	<b>M</b>	<b>M</b>
	0065	<b>Message type identifier</b> Code identifying a type of message and assigned by its controlling agency. DESADV Despatch advice message A message specifying details for goods despatched or ready for despatch under agreed conditions. The United Nations Despatch Advice Message serves both as a specification for Delivery Despatch Advice and also as a Returns Despatch Advice message.	<b>M an..6</b>	<b>M</b>
	0052	<b>Message type version number</b> Version number of a message type. D Draft	<b>M an..3</b>	<b>M</b>
	0054	<b>Message type release number</b> Release number within the current message type version number (0052). 96A	<b>M an..3</b>	<b>M</b>
	0051	<b>Controlling agency</b> Code identifying the agency controlling the specification, maintenance and publication of the message type. UN UN/ECE/TRADE/WP.4, United Nations Standard Messages (UNSM) UN Economic Commission for Europe (UN/ECE), Committee on the development of trade (TRADE), Working Party on facilitation of international trade procedures (WP.4).	<b>M an..2</b>	<b>M</b>
	0057	<b>Association assigned code</b> Code, assigned by the association responsible for the design and maintenance of the message type concerned, which further identifies the message. A01051	<b>C an..6</b>	<b>M</b>



**Segment:** **BGM** Beginning of Message  
**Position:** 0020  
**Group:**  
**Level:** 0  
**Usage:** Mandatory  
**Max Use:** 1  
**Purpose:** A segment for unique identification of the Despatch Advice document, by means of its name and its number.

**Dependency Notes:**

**Comments:**

**Notes:** Example: BGM+351+113776'

**Data Element Summary**

<u>Data Element</u>	<u>Component Element</u>	<u>Name</u>	<u>Base Attributes</u>	<u>User Attributes</u>
C002		<b>DOCUMENT/MESSAGE NAME</b>	<b>C</b>	<b>M</b>
		Identification of a type of document/message by code or name. Code preferred.		
	<b>1001</b>	<b>Document/message name, coded</b>	<b>C an..3</b>	<b>M</b>
		Document/message identifier expressed in code. 351 Despatch advice Document/message by means of which the seller or consignor informs the consignee about the despatch of goods.		
<b>1004</b>		<b>DOCUMENT/MESSAGE NUMBER</b>	<b>C an..35</b>	<b>M n..8</b>
		Reference number assigned to the document/message by the issuer. Unique number for the Despatch Advice (AVIEXP/DESADV). The number must correspond to the Despatch Note number. The number must not be repeated in one year.		
		Please note: This data element is also used in the ODETTE label. Restrictions might occur in the data length. The number must be without leading zero's or spaces.		



**Segment:** **DTM** Date/Time/Period  
**Position:** 0030  
**Group:**  
**Level:** 0  
**Usage:** Conditional (Required)  
**Max Use:** 1  
**Purpose:** Date/time/period related to the whole message. The DTM segment must be specified at least once to identify the Despatch Advice date.

**Dependency Notes:**

**Comments:**

**Notes:** Example: DTM+137:200103061219:203'

**Data Element Summary**

<u>Data Element</u>	<u>Component Element</u>	<u>Name</u>	<u>Base Attributes</u>	<u>User Attributes</u>
C507		<b>DATE/TIME/PERIOD</b> Date and/or time, or period relevant to the specified date/time/period type.	<b>M</b>	<b>M</b>
	<b>2005</b>	<b>Date/time/period qualifier</b> Code giving specific meaning to a date, time or period.	<b>M an..3</b>	<b>M</b>
		137 Document/message date/time (2006) Date/time when a document/message is issued. This may include authentication.		
	<b>2380</b>	<b>Date/time/period</b> The value of a date, a date and time, a time or of a period in a specified representation.	<b>C an..35</b>	<b>M an12</b>
	<b>2379</b>	<b>Date/time/period format qualifier</b> Specification of the representation of a date, a date and time or of a period.	<b>C an..3</b>	<b>M</b>
		203 CCYYMMDDHHMM Calendar date including time with minutes: C=Century; Y=Year; M=Month; D=Day; H=Hour; M=Minutes.		



**Segment:** **MEA** Measurements  
**Position:** 0050  
**Group:**  
**Level:** 1  
**Usage:** Conditional (Optional)  
**Max Use:** 5  
**Purpose:** A segment specifying the weight and volume of the consignment.  
**Dependency Notes:**  
**Comments:**  
**Notes:**

Example: MEA+AAX+AAD+KGM:100'  
 MEA+AAX+ABJ+CUM:2'

**Data Element Summary**

<u>Data Element</u>	<u>Component Element</u>	<u>Name</u>	<u>Base Attributes</u>	<u>User Attributes</u>
6311		<b>MEASUREMENT APPLICATION QUALIFIER</b> Specification of the application of the physical measurement used.	<b>M an..3</b>	<b>M</b>
	AAX	Consignment measurement Measurement related to a consignment; to be specified by the measurement code dimension value.		
C502		<b>MEASUREMENT DETAILS</b> Identification of measurement type.	<b>C</b>	
	6313	<b>Measurement dimension, coded</b> Specification of the type of dimension to be measured.	<b>C an..3</b>	
	AAD	Total gross weight [6292] Weight (mass) of goods including packing but excluding the carrier's equipment.		
	ABJ	Volume The amount of air space taken up by the entity identified in the 6311 qualifier.		
C174		<b>VALUE/RANGE</b> Measurement value and relevant minimum and maximum tolerances in that order.	<b>C</b>	
	6411	<b>Measure unit qualifier</b> Indication of the unit of measurement in which weight (mass), capacity, length, area, volume or other quantity is expressed.	<b>M an..3</b>	<b>M</b>
	CUM	Cubic Metre		
	KGM	Kilogram		
	6314	<b>Measurement value</b> Value of the measured unit.	<b>C n..18</b>	



**Group:** **RF** Segment Group 1: Reference  
**Position:** 0070  
**Group:**  
**Level:** 1  
**Usage:** Conditional (Required)  
**Max Use:** 2  
**Purpose:** A group of segments giving references where necessary, their dates relating to the whole message, e.g. contract number.

**Segment Summary**

	<u>Pos.</u> <u>No.</u>	<u>Seg.</u> <u>ID</u>	<u>Name</u>	<u>Req.</u> <u>Des.</u>	<u>Max.</u> <u>Use</u>	<u>Group:</u> <u>Repeat</u>
M	0080	RF	Reference	M	1	



**Segment:** **RFF** Reference  
**Position:** 0080 (Trigger Segment)  
**Group:** Segment Group 1 (Reference) Conditional (Required)  
**Level:** 1  
**Usage:** Mandatory  
**Max Use:** 1  
**Purpose:** A segment for referencing documents relating to the whole despatch advice message, e.g. purchase orders, delivery instructions, import/export license.

**Dependency Notes:**

**Comments:**

**Notes:**

Example: RFF+AAS:123456789'  
 RFF+CRN:987654321'

**Data Element Summary**

<u>Data Element</u>	<u>Component Element</u>	<u>Name</u>	<u>Base Attributes</u>	<u>User Attributes</u>
C506		<b>REFERENCE</b> Identification of a reference.	<b>M</b>	<b>M</b>
	<b>1153</b>	<b>Reference qualifier</b> Code giving specific meaning to a reference segment or a reference number.	<b>M an..3</b>	<b>M</b>
		<b>AAS</b> Transport document number [1188] Reference assigned by the carrier or his agent to the transport document. <b>Must be used</b>		
	<b>CRN</b> Conveyance reference number [8028] Unique reference given by the carrier to a certain journey or departure of a means of transport (generic term).			
<b>1154</b>	<b>Reference number</b> Identification number the nature and function of which can be qualified by an entry in data element 1153 Reference qualifier.	<b>C an..35</b>	<b>M an..17</b>	
	<b>Note for qualifier AAS:</b> When agreement is made to use the Volvo logistics document (VTD) as transport document, this document will replace any other international or domestic transport document. For more information, see the Transport Instructions.			
	The reference number must be clearly shown on the Transport document and be identical to the number given in the data element 1154 in this RFF segment			



**Group:** **NAD** Segment Group 2: Name and Address  
**Position:** 0100  
**Group:**  
**Level:** 1  
**Usage:** Conditional (Required)  
**Max Use:** 4  
**Purpose:** A group of segments identifying names, addresses, locations, and required supporting documents relevant to the whole Despatch Advice.

**Segment Summary**

	<b>Pos.</b>	<b>Seg.</b>		<b>Req.</b>	<b>Max.</b>	<b>Group:</b>
	<b>No.</b>	<b>ID</b>	<b>Name</b>	<b>Des.</b>	<b>Use</b>	<b>Repeat</b>
M	0110	NAD	Name and Address	M	1	
D	0120	LOC	Place/Location Identification	C	1	



**Segment:** **NAD** Name and Address  
**Position:** 0110 (Trigger Segment)  
**Group:** Segment Group 2 (Name and Address) Conditional (Required)  
**Level:** 1  
**Usage:** Mandatory  
**Max Use:** 1  
**Purpose:** A segment for identifying names, addresses, and their functions relevant to the whole Despatch Advice. Identification of the parties involved is recommended for the Despatch Advice message, and is to be given in the NAD segment.  
 It is recommended that where possible, only the coded form of the party ID should be specified, e.g. the buyer and seller are known to each other, thus only the coded ID is required. The consignee or delivery address may vary and would have to be clearly specified, preferably in structured format.

**Dependency Notes:**  
**Comments:**  
**Notes:**

Example: NAD+CZ+ABCD1::92'  
 NAD+SE+ABCD2::92'  
 NAD+CN+S7VVA::92'  
 NAD+CA+CARGOCARE::92'

**Data Element Summary**

<u>Data Element</u>	<u>Component Element</u>	<u>Name</u>	<u>Base Attributes</u>	<u>User Attributes</u>
3035		<b>PARTY QUALIFIER</b> Code giving specific meaning to a party. <b>Business Rules:</b> Variable Name:NAD3035ParQual	M an..3	M
	CA	Carrier (3126) Party undertaking or arranging transport of goods between named points. Mandatory. Volvo's identity on the carrier. If the carrier code is unknown, insert NIL.		
	CN	Consignee (3132) Party to which goods are consigned. Mandatory. To be followed by LOC with qualifier: 11. Volvo's plant or warehouse number. See Code list below.		
	CZ	Consignor (3336) Party which, by contract with a carrier, consigns or sends goods with the carrier, or has them conveyed by him. Synonym: shipper, sender. Mandatory. The id allocated to the consignor, sending the goods. Id provided by Volvo Car.		
	SE	Seller (3346) Party selling merchandise to a buyer. Dependent. Used when the consignor and the seller have been allocated different id by Volvo. Id provided by Volvo Car.		
C082		<b>PARTY IDENTIFICATION DETAILS</b> Identification of a transaction party by code.	C	M
	3039	<b>Party id. identification</b> Code identifying a party involved in a transaction. <b>Business Rules:</b> Variable Name:NAD3039ParIdNo	M an..35	M an..20



Code list below, used for CN, Consignee

BP2TC	Overseas Manufacturing, Maastricht
BP2TD	Body Plant, Torslanda
BP2TF	Special Vehicles, Torslanda
BP2TG	Engine Chassis Centre, Torslanda
BP2TH	Assembly Plant, Torslanda
BP2TU	Pilot Plant, Torslanda
BP2TW	Customer Service, Torslanda
BS8CA	Assembly Plant, Gent
BS8CB	Engine Centre, Gent
BS8CE	Special Vehicles, Gent
BSB5A	Engine, Floby
BSNRA	Body Components, Olofström
C7CUL	Engine Plant, Skövde
DV8VE	Engine Chassis Centre, Uddevalla
S7VVA	Pininfarina Assembly Plant, Uddevalla

**3055** **Code list responsible agency, coded** **C** **an..3** **M**  
Code identifying the agency responsible for a code list.  
92 Assigned by buyer or buyer's agent



**Segment:** **LOC** Place/Location Identification  
**Position:** 0120  
**Group:** Segment Group 2 (Name and Address) Conditional (Required)  
**Level:** 2  
**Usage:** Conditional (Dependent)  
**Max Use:** 1  
**Purpose:** A segment indicating more details regarding specific places/locations related to the party specified in the NAD segment, e.g. internal site/building number.

**Dependency Notes:**

**Comments:**

**Notes:** Used only together with qualifier CN in NAD.  
 Example: LOC+11+TVV::92'

**Data Element Summary**

<u>Data Element</u>	<u>Component Element</u>	<u>Name</u>	<u>Base Attributes</u>	<u>User Attributes</u>
3227		<b>PLACE/LOCATION QUALIFIER</b> Code identifying the function of a location.	<b>M an..3</b>	<b>M</b>
	11	Place/port of discharge (3392 + 3414) Seaport, airport, freight terminal, rail station or other place at which the goods (cargo) are unloaded from the means of transport having been used for their carriage.		
C517		<b>LOCATION IDENTIFICATION</b> Identification of a location by code or name.	<b>C</b>	<b>M</b>
	3225	<b>Place/location identification</b> Identification of the name of place/location, other than 3164 City name. Volvo's identity on the place of discharge. State the identity indicated in the DELFOR message.	<b>C an..25</b>	<b>M an..8</b>
	3055	<b>Code list responsible agency, coded</b> Code identifying the agency responsible for a code list.	<b>C an..3</b>	<b>M</b>
	92	Assigned by buyer or buyer's agent		



**Group:** **CPS** Segment Group 10: Consignment Packing Sequence  
**Position:** 0370  
**Group:**  
**Level:** 1  
**Usage:** Conditional (Required)  
**Max Use:** 9999  
**Purpose:** A group of segments providing details of all package levels and of the individual despatched items contained in the consignment. This segment group provides the capability to give the hierarchical packing relationships. The group defines a logical top-down order structure. The lowest level package information of the hierarchy is followed by the detail product information.

**Segment Summary**

	<b>Pos. No.</b>	<b>Seg. ID</b>	<b>Name</b>	<b>Req. Des.</b>	<b>Max. Use</b>	<b>Group: Repeat</b>
M	0380	CPS	Consignment Packing Sequence	M	1	
	0400		Segment Group 11: Package	C		9999
	0550		Segment Group 15: Line Item	O		9999



**Segment:** **CPS** Consignment Packing Sequence  
**Position:** 0380 (Trigger Segment)  
**Group:** Segment Group 10 (Consignment Packing Sequence) Conditional  
 (Required)  
**Level:** 1  
**Usage:** Mandatory  
**Max Use:** 1  
**Purpose:** A segment identifying the sequence in which packing of the consignment occurs, e.g. boxes loaded onto a pallet.

**Dependency Notes:**

**Comments:**

**Notes:** Example: CPS+1++1'

**Data Element Summary**

<u>Data Element</u>	<u>Component Element</u>	<u>Name</u>	<u>Base Attributes</u>	<u>User Attributes</u>
7164		<b>HIERARCHICAL ID. NUMBER</b>	<b>M an..12</b>	<b>M an..6</b>
		A unique number assigned by the sender to identify a level within a hierarchical structure.		
7075		<b>PACKAGING LEVEL, CODED</b>	<b>C an..3</b>	<b>M</b>
		Indication of level of packaging specified.		
		1 Inner		
		Level of packing, if it exists, that is immediately subordinate to the intermediate packaging level.		



**Group:** **PAC** Segment Group 11: Package  
**Position:** 0400  
**Group:** Segment Group 10 (Consignment Packing Sequence) Conditional (Required)  
**Level:** 2  
**Usage:** Conditional (Required)  
**Max Use:** 9999  
**Purpose:** A group of segments identifying packaging, physical dimensions, marks and numbers, quantities, date and time information, handling information and information about packing at this level.

**Segment Summary**

	<b>Pos.</b>	<b>Seg.</b>		<b>Req.</b>	<b>Max.</b>	<b>Group:</b>
	<b>No.</b>	<b>ID</b>	<b>Name</b>	<b>Des.</b>	<b>Use</b>	<b>Repeat</b>
M	0410	PAC	Package	M	1	
M	0430	QTY	Quantity	C	1	
	0470		Segment Group 13: Package Identification	C		1000



**Segment:** **PAC Package**  
**Position:** 0410 (Trigger Segment)  
**Group:** Segment Group 11 (Package)      Conditional (Required)  
**Level:** 2  
**Usage:** Mandatory  
**Max Use:** 1  
**Purpose:** A segment specifying the number and type of the packages/physical units and the physical type of packaging for the despatched goods.

**Dependency Notes:**

**Comments:**

**Notes:** Example: PAC+2++NIL::92'

**Data Element Summary**

<u>Data Element</u>	<u>Component Element</u>	<u>Name</u>	<u>Base Attributes</u>	<u>User Attributes</u>
7224		<b>NUMBER OF PACKAGES</b>	<b>C n..8</b>	<b>M n..6</b>
		Number of individual parts of a shipment either unpacked, or packed in such a way that they cannot be divided without first undoing the packing.		
		Number of packages = numbers of S-labeled units (standard pallets or small boxes). Empty packages shall not be included.		
C202		<b>PACKAGE TYPE</b>	<b>C</b>	<b>M</b>
		Type of package by name or by code from a specified source.		
	7065	<b>Type of packages identification</b>	<b>C an..17</b>	<b>M</b>
		If no information have been given by Volvo Car's logistic provider, insert NIL		
		Coded description of the form in which goods are presented.		
	3055	<b>Code list responsible agency, coded</b>	<b>C an..3</b>	<b>M</b>
		Code identifying the agency responsible for a code list.		
		92	Assigned by buyer or buyer's agent	



**Segment:** **QTY** Quantity  
**Position:** 0430  
**Group:** Segment Group 11 (Package) Conditional (Required)  
**Level:** 3  
**Usage:** Conditional (Required)  
**Max Use:** 1  
**Purpose:** A segment to specify the quantity per package described in the PAC segment.

**Dependency Notes:**

**Comments:**

**Notes:** Example: QTY+52:128:PCE'

**Data Element Summary**

<u>Data Element</u>	<u>Component Element</u>	<u>Name</u>	<u>Base Attributes</u>	<u>User Attributes</u>
C186		<b>QUANTITY DETAILS</b> Quantity information in a transaction, qualified when relevant.	<b>M</b>	<b>M</b>
	6063	<b>Quantity qualifier</b> Code giving specific meaning to a quantity. 52 Quantity per pack	<b>M an..3</b>	<b>M</b>
	6060	<b>Quantity</b> Numeric value of a quantity.	<b>M n..15</b>	<b>M n..10</b>
	6411	<b>Measure unit qualifier</b> Indication of the unit of measurement in which weight (mass), capacity, length, area, volume or other quantity is expressed. Sort code according to ISO standard. See ODDC025. If blank, the value PCE is assumed.	<b>C an..3</b>	<b>D</b>



**Group:** **PCI** Segment Group 13: Package Identification  
**Position:** 0470  
**Group:** Segment Group 11 (Package) Conditional (Required)  
**Level:** 3  
**Usage:** Conditional (Required)  
**Max Use:** 1000  
**Purpose:** A group of segments specifying markings, labels, and packing numbers.

**Segment Summary**

	<b>Pos.</b>	<b>Seg.</b>		<b>Req.</b>	<b>Max.</b>	<b>Group:</b>
	<b>No.</b>	<b>ID</b>	<b>Name</b>	<b>Des.</b>	<b>Use</b>	<b>Repeat</b>
M	0480	PCI	Package Identification	M	1	
D	0490	RFF	Reference	C	1	
M	0510	GIR	Related Identification Numbers	C	99	



**Segment:** **PCI** Package Identification  
**Position:** 0480 (Trigger Segment)  
**Group:** Segment Group 13 (Package Identification) Conditional (Required)  
**Level:** 3  
**Usage:** Mandatory  
**Max Use:** 1  
**Purpose:** A segment specifying markings and/or labels used on individual physical units (packages) described in the PAC segment.

**Dependency Notes:**

**Comments:**

**Notes:**

Example: PCI++++S::92'  
 PCI++++M::92'  
 PCI++++G::92'

**Data Element Summary**

<u>Data Element</u>	<u>Component Element</u>	<u>Name</u>	<u>Base Attributes</u>	<u>User Attributes</u>
C827		<b>TYPE OF MARKING</b> Specification of the type of marking that reflects the method that was used and the conventions adhered to for marking (e.g. of packages).	<b>C</b>	<b>M</b>
	7511	<b>Type of marking, coded</b> To specify the type of marking that reflects the method and the conventions adhered to for marking. <b>Business Rules:</b> Variable Name:PCI7511TypeOfMar G Mixed Handling Unit M Homogeneous Handling Unit S Simplified Handling Unit	<b>M an..3</b>	<b>M an1</b>
	3055	<b>Code list responsible agency, coded</b> Code identifying the agency responsible for a code list. 92 Assigned by buyer or buyer's agent	<b>C an..3</b>	<b>M</b>



**Segment:** **RFF** Reference  
**Position:** 0490  
**Group:** Segment Group 13 (Package Identification) Conditional (Required)  
**Level:** 4  
**Usage:** Conditional (Dependent)  
**Max Use:** 1  
**Purpose:** A segment for referencing the package identification e.g. master label number.

**Dependency Notes:**

**Comments:**

**Notes:** This segment shall only be used when homogenous "M" or mixed "G" handling units are used.  
 Example: RFF+AAT:191'

**Data Element Summary**

<u>Data Element</u>	<u>Component Element</u>	<u>Name</u>	<u>Base Attributes</u>	<u>User Attributes</u>
C506		<b>REFERENCE</b> Identification of a reference.	<b>M</b>	<b>M</b>
	1153	<b>Reference qualifier</b> Code giving specific meaning to a reference segment or a reference number. AAT Master label number Identifies the master label number of any package type.	<b>M an..3</b>	<b>M</b>
	1154	<b>Reference number</b> Identification number the nature and function of which can be qualified by an entry in data element 1153 Reference qualifier. The number must be given without leading zeroes or spaces.	<b>C an..35</b>	<b>M an..9</b>



**Segment:** **GIR** Related Identification Numbers  
**Position:** 0510  
**Group:** Segment Group 13 (Package Identification) Conditional (Required)  
**Level:** 4  
**Usage:** Conditional (Required)  
**Max Use:** 99  
**Purpose:** A segment providing set of package identification related numbers, e.g. a package label number and a KANBAN card number assigned to the same package.

**Dependency Notes:**

**Comments:**

**Notes:**

Example: GIR+3+123:ML'  
 GIR+3+123:ML+324:BX'

**Data Element Summary**

<u>Data Element</u>	<u>Component Element</u>	<u>Name</u>	<u>Base Attributes</u>	<u>User Attributes</u>
7297		<b>SET IDENTIFICATION QUALIFIER</b> Identification of the type of set. 3 Package Related numbers identifying a package such as a bar code label number related to a kanban card number, etc.	M an..3	M
C206		<b>IDENTIFICATION NUMBER</b> The identification of an object. Package label number for all S-marked units, simplified handling units and small box. The segment will be repeated for each Package Label Number.	M	M
	7402	<b>Identity number</b> A value given to an object for identification purposes. Package Number. The number must be given without leading spaces or zeroes.	M n..35	M n..9
	7405	<b>Identity number qualifier</b> Code specifying the type/source of identity number. ML Marking/label number	C an..3	M
C206		<b>IDENTIFICATION NUMBER</b> The identification of an object. This data element is required for Vital Safety Parts and when special traceability is required - Document Obligation. Prefix H in barcode on the label.	C	D
	7402	<b>Identity number</b> A value given to an object for identification purposes. Production Batch Number.	M n..35	M n..9
	7405	<b>Identity number qualifier</b> Code specifying the type/source of identity number. BX Batch number Unique number affixed by manufacturer to a batch of products produced under similar conditions.	C an..3	M



**Group:** **LIN** Segment Group 15: Line Item  
**Position:** 0550  
**Group:** Segment Group 10 (Consignment Packing Sequence) Conditional (Required)  
**Level:** 2  
**Usage:** Optional (Required)  
**Max Use:** 9999  
**Purpose:** A group of segments providing details of the individual despatched items.

**Segment Summary**

	<b>Pos.</b>	<b>Seg.</b>	<b>Name</b>	<b>Req.</b>	<b>Max.</b>	<b>Group:</b>
	<b>No.</b>	<b>ID</b>		<b>Des.</b>	<b>Use</b>	<b>Repeat</b>
M	0560	LIN	Line Item	M	1	
D	0570	PIA	Additional Product Id	C	1	
M	0600	QTY	Quantity	C	2	
M	0610	ALI	Additional Information	C	1	
D	0620	GIN	Goods Identity Number	C	100	
D	0670	MOA	Monetary Amount	C	1	
	0680		Segment Group 16: Reference	C		4
	0750		Segment Group 18: Place/Location Identification	C		1



**Segment:** **LIN** Line Item  
**Position:** 0560 (Trigger Segment)  
**Group:** Segment Group 15 (Line Item)      Optional (Required)  
**Level:** 2  
**Usage:** Mandatory  
**Max Use:** 1  
**Purpose:** A segment identifying the product being despatched.  
 All other segments in the detail section following the LIN segment refer to that line item.

**Dependency Notes:**

**Comments:**

**Notes:** Example: LIN+++1234567:IN++0'

**Data Element Summary**

<u>Data Element</u>	<u>Component Element</u>	<u>Name</u>	<u>Base Attributes</u>	<u>User Attributes</u>
C212		<b>ITEM NUMBER IDENTIFICATION</b> Goods identification for a specified source.	C	M
	7140	<b>Item number</b> A number allocated to a group or item. Volvo Cars article number shall be given without leading blanks or zeroes.	C an..35	M
	7143	<b>Item number type, coded</b> Identification of the type of item number. IN Buyer's item number	C an..3	M
1222		<b>CONFIGURATION LEVEL</b> Number indicating the level of an object which is in a hierarchy. 0 No level (single article package case)	C n..2	M



**Segment:** **PIA** Additional Product Id  
**Position:** 0570  
**Group:** Segment Group 15 (Line Item) Optional (Required)  
**Level:** 3  
**Usage:** Conditional (Dependent)  
**Max Use:** 1  
**Purpose:** A segment providing additional product identification.  
**Dependency Notes:**  
**Comments:**  
**Notes:** This segment will only be used after special agreement.  
 Example: PIA+1+P04:DR'

**Data Element Summary**

<u>Data Element</u>	<u>Component Element</u>	<u>Name</u>	<u>Base Attributes</u>	<u>User Attributes</u>
4347		<b>PRODUCT ID. FUNCTION QUALIFIER</b> Indication of the function of the product code. 1 Additional identification Information which specifies and qualifies product identifications.	M an..3	M
C212		<b>ITEM NUMBER IDENTIFICATION</b> Goods identification for a specified source.	M	M
	7140	<b>Item number</b> A number allocated to a group or item.	C an..35	M an..14
	7143	<b>Item number type, coded</b> Identification of the type of item number. DR Drawing revision number Reference number indicating that a change or revision has been applied to a drawing.	C an..3	M





**Segment:** **ALI** Additional Information  
**Position:** 0610  
**Group:** Segment Group 15 (Line Item) Optional (Required)  
**Level:** 3  
**Usage:** Conditional (Required)  
**Max Use:** 1  
**Purpose:** A segment indicating that the line item is subject to special conditions due to origin, customs preference, or commercial factors.

**Dependency Notes:**

**Comments:**

**Notes:** Example: ALI+UK'

**Data Element Summary**

<u>Data Element</u>	<u>Component Element</u>	<u>Name</u>	<u>Base Attributes</u>	<u>User Attributes</u>
3239		<b>COUNTRY OF ORIGIN, CODED</b> Country in which the goods have been produced or manufactured, according to criteria laid down for the purposes of application of the Customs tariff, of quantitative restrictions, or of any other measure related to trade.	<b>C an..3</b>	<b>M an..2</b>
9213		<b>TYPE OF DUTY REGIME, CODED</b> Identification of the statement of the full/preferential regime according to which duty is assessed. Required information for trade between countries that have a free trade agreement with the EU. In this case, confirmation is to be given if the delivered article complies with the terms for origin goods, specified in the current free trade agreement. Note: Only origin goods can be exempted from customs duty when imported to EU countries. The fact that an article is produced/assembled in a country covered by a free trade agreement does not automatically entitle the article to be exempted from customs duty. The article must comply with the current rules of origin to be exempt from customs duty. Quote one of the above mentioned alternative values to confirm that the article complies with the rules of origin specified in current free trade agreements.	<b>C an..3</b>	<b>D</b>
		0 No preference origin		
		1 Origin subject to EC/EFTA preference		



**Segment:** **GIN** Goods Identity Number  
**Position:** 0620  
**Group:** Segment Group 15 (Line Item) Optional (Required)  
**Level:** 3  
**Usage:** Conditional (Dependent)  
**Max Use:** 100  
**Purpose:** A segment providing identity numbers of the goods being despatched, e.g. serial numbers for assembled equipment.

**Dependency Notes:**

**Comments:**

**Notes:**

This segment will only be used after special agreement. If more than one identity will be given, use primarily the first five appearances of C208, before you repeat the segment.  
 Example: GIN+VV+237005'

**Data Element Summary**

<u>Data Element</u>	<u>Component Element</u>	<u>Name</u>	<u>Base Attributes</u>	<u>User Attributes</u>
7405		<b>IDENTITY NUMBER QUALIFIER</b> Code specifying the type/source of identity number.	<b>M an..3</b>	<b>M</b>
		BN Serial number Identification number of an item which distinguishes this specific item out of a number of identical items.		
		EE Engine number Unique number affixed by manufacturer to an engine for identification purposes.		
		VV Vehicle identity number Unique serial number assigned by the manufacturer that distinguishes one vehicle from another.		
C208		<b>IDENTITY NUMBER RANGE</b> Goods item identification numbers, start and end of consecutively numbered range.	<b>M</b>	<b>M</b>
	7402	<b>Identity number</b> A value given to an object for identification purposes.	<b>M n..35</b>	<b>M</b>



**Segment:** **MOA** Monetary Amount  
**Position:** 0670  
**Group:** Segment Group 15 (Line Item) Optional (Required)  
**Level:** 3  
**Usage:** Conditional (Dependent)  
**Max Use:** 1  
**Purpose:** A segment giving monetary amounts required by the consignee to undertake customs clearance procedures.

**Dependency Notes:**

**Comments:**

**Notes:** Required information for deliveries containing goods that are not in free circulation within EU ( not customs cleared within EU).  
 Example: MOA+40:530:SEK'

**Data Element Summary**

<u>Data Element</u>	<u>Component Element</u>	<u>Name</u>	<u>Base Attributes</u>	<u>User Attributes</u>
<b>C516</b>		<b>MONETARY AMOUNT</b> Amount of goods or services stated as a monetary amount in a specified currency.	<b>M</b>	<b>M</b>
	<b>5025</b>	<b>Monetary amount type qualifier</b> Indication of type of amount. 40 Customs value (5032) Value declared for Customs purposes on those goods in a consignment which are subject to the same Customs procedure, and have the same tariff/statistical heading, country information and duty regime.	<b>M an..3</b>	<b>M</b>
	<b>5004</b>	<b>Monetary amount</b> Number of monetary units. Example: 5555:00 is stated 5555 or 5555.0 or 5555,0 5555:50 is stated 5555.5 or 5555,5 5555:55 is stated 5555.55 or 5555,55	<b>C n..18</b>	<b>M n..15</b>
	<b>6345</b>	<b>Currency, coded</b> Identification of the name or symbol of the monetary unit involved in the transaction.	<b>C an..3</b>	<b>M</b>



**Group:** **RFF** Segment Group 16: Reference  
**Position:** 0680  
**Group:** Segment Group 15 (Line Item) Optional (Required)  
**Level:** 3  
**Usage:** Conditional (Required)  
**Max Use:** 4  
**Purpose:** A group of segments to give reference numbers and dates.

**Segment Summary**

	<b>Pos.</b>	<b>Seg.</b>		<b>Req.</b>	<b>Max.</b>	<b>Group:</b>
	<b>No.</b>	<b>ID</b>	<b>Name</b>	<b>Des.</b>	<b>Use</b>	<b>Repeat</b>
M	0690	RFF	Reference	M	1	
D	0700	DTM	Date/Time/Period	C	1	



**Segment:** **RFF** Reference  
**Position:** 0690 (Trigger Segment)  
**Group:** Segment Group 16 (Reference) Conditional (Required)  
**Level:** 3  
**Usage:** Mandatory  
**Max Use:** 1  
**Purpose:** A segment identifying documents related to the line item.  
**Dependency Notes:**  
**Comments:**

**Notes:**  
 Example: RFF+ON:123412345445'  
 RFF+AAE:7654321'  
 RFF+AAP:978'  
 RFF+IV:1234567'

**Data Element Summary**

<u>Data Element</u>	<u>Component Element</u>	<u>Name</u>	<u>Base Attributes</u>	<u>User Attributes</u>
C506		<b>REFERENCE</b> Identification of a reference.	<b>M</b>	<b>M</b>
	<b>1153</b>	<b>Reference qualifier</b> Code giving specific meaning to a reference segment or a reference number. <b>Business Rules:</b> Variable Name:RFF1153RefQual AAP Part consignment number [1310] Reference to a specific consignment forming part of a contract allowing part deliveries. Dependent. Used after special agreements. AEE Eur 1 certificate number Reference number assigned to a Eur 1 certificate. Dependent. Used for trade between countries that has free trade agreements with the EC and EU. To be followed by DTM with qualifier: 171. IV Invoice number [1334] Reference number assigned by the seller to a Commercial Invoice. Dependent. Used for deliveries containing goods that is not in free circulation within the EU (not custom cleared within EU). To be followed by DTM with qualifier: 171. ON Order number (purchase) [1022] Reference number assigned by the buyer to an order. Required.	<b>M an..3</b>	<b>M</b>
	<b>1154</b>	<b>Reference number</b> Identification number the nature and function of which can be qualified by an entry in data element 1153 Reference qualifier.	<b>C an..35</b>	<b>M an..17</b>



**Segment:** **DTM** Date/Time/Period  
**Position:** 0700  
**Group:** Segment Group 16 (Reference) Conditional (Required)  
**Level:** 4  
**Usage:** Conditional (Dependent)  
**Max Use:** 1  
**Purpose:** A segment for date/time/period relative to the referred document.

**Dependency Notes:**

**Comments:**

**Notes:** Used with qualifier IV and AEE in the RFF segment.  
 Example: DTM:171:20010301:102'

**Data Element Summary**

<u>Data Element</u>	<u>Component Element</u>	<u>Name</u>	<u>Base Attributes</u>	<u>User Attributes</u>
C507		<b>DATE/TIME/PERIOD</b> Date and/or time, or period relevant to the specified date/time/period type.	<b>M</b>	<b>M</b>
	<b>2005</b>	<b>Date/time/period qualifier</b> Code giving specific meaning to a date, time or period. 171 Reference date/time Date/time on which the reference was issued.	<b>M an..3</b>	<b>M</b>
	<b>2380</b>	<b>Date/time/period</b> The value of a date, a date and time, a time or of a period in a specified representation.	<b>C an..35</b>	<b>M an8</b>
	<b>2379</b>	<b>Date/time/period format qualifier</b> Specification of the representation of a date, a date and time or of a period. 102 CCYYMMDD Calendar date: C = Century ; Y = Year ; M = Month ; D = Day.	<b>C an..3</b>	<b>M</b>



**Group:** **LOC** Segment Group 18: Place/Location Identification  
**Position:** 0750  
**Group:** Segment Group 15 (Line Item) Optional (Required)  
**Level:** 3  
**Usage:** Conditional (Required)  
**Max Use:** 1  
**Purpose:** A group of segments giving location information and where relevant, additional addresses, date and time, and quantities.

**Segment Summary**

	<u>Pos.</u> <u>No.</u>	<u>Seg.</u> <u>ID</u>	<u>Name</u>	<u>Req.</u> <u>Des.</u>	<u>Max.</u> <u>Use</u>	<u>Group:</u> <u>Repeat</u>
M	0760	LOC	Place/Location Identification	M	1	



**Segment:** **LOC** Place/Location Identification  
**Position:** 0760 (Trigger Segment)  
**Group:** Segment Group 18 (Place/Location Identification) Conditional  
 (Required)  
**Level:** 3  
**Usage:** Mandatory  
**Max Use:** 1  
**Purpose:** A segment identifying a specific location to which products will be delivered.

**Dependency Notes:**

**Comments:**

**Notes:** Example: LOC+159+TVV::92'

**Data Element Summary**

<u>Data Element</u>	<u>Component Element</u>	<u>Name</u>	<u>Base Attributes</u>	<u>User Attributes</u>
3227		<b>PLACE/LOCATION QUALIFIER</b> Code identifying the function of a location.	<b>O an..3</b>	<b>C</b>
		159 Additional internal destination Any location within the consignee's premises where the goods are moved to.		
C517		<b>LOCATION IDENTIFICATION</b> Identification of a location by code or name.	<b>C</b>	<b>M</b>
	3225	<b>Place/location identification</b> Identification of the name of place/location, other than 3164 City name.	<b>C an..25</b>	<b>M an..12</b>
		The information from LOC 3225 with qualifier 159 in LOC 3227 in the DELFOR message shall be inserted here and be printed on the transport label in the field "Dock and gate".		
	3055	<b>Code list responsible agency, coded</b> Code identifying the agency responsible for a code list.	<b>C an..3</b>	<b>M</b>
		92 Assigned by buyer or buyer's agent		



**Segment:** **UNT** Message Trailer  
**Position:** 0990  
**Group:**  
**Level:** 0  
**Usage:** Mandatory  
**Max Use:** 1  
**Purpose:** A service segment ending a message, giving the total number of segments in the message and the control reference number of the message.

**Dependency Notes:**

**Comments:**

**Notes:** Example: UNT+21+00001'

**Data Element Summary**

<u>Data Element</u>	<u>Component Element</u>	<u>Name</u>	<u>Base Attributes</u>	<u>User Attributes</u>
0074		<b>NUMBER OF SEGMENTS IN A MESSAGE</b> Control count of number of segments in a message.	M n..6	M
0062		<b>MESSAGE REFERENCE NUMBER</b> Unique message reference assigned by the sender.	M an..14	M